

SPRING 2020



National
Trust Jersey

Patron: HRH The Prince of Wales



Discover

THE MAGAZINE OF THE NATIONAL TRUST FOR JERSEY



DISCOVER | ENJOY | PROTECT | JOIN & GET INVOLVED

FRONT COVER

'Dolphins off Les Écréhous'
by John Ovenden

In this issue

P4

VIEW POINT

Charles Alluto, CEO

P6

IN THE NEWS

P10

DISCOVER HISTORIC BUILDINGS

Tesson Mill

P13

LANDSCAPES

The National Park

P15

LANDSCAPES

Mourier Valley

P18

LANDSCAPES

Changing Face of St Ouen's Bay

P22

PROTECT

Coastline Campaign

P24

PROTECT

Hedge Fund

P26

ENJOY

Annual Dinner and Rob Stoneman

P28

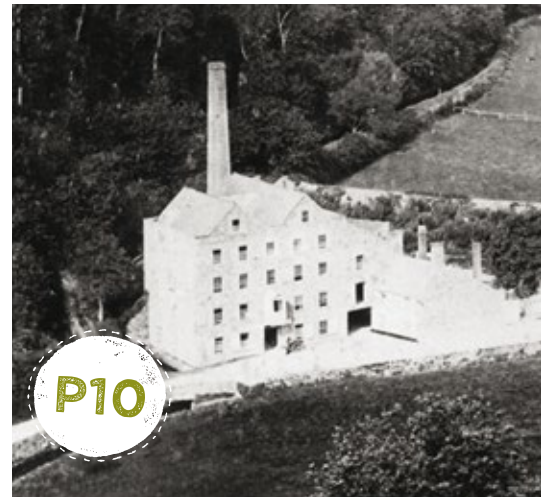
MEET YOUR GUIDE

Sue Hardy Blue Badge Guide

P6



P10



P18



P22





P29

MY JERSEY

Francis Binney

P30

PROTECT

Jersey Island Plan Review

P32

IN THE SPOTLIGHT

Karin Taylor

P34

ACTIVITIES TO ENJOY

P35

JÈRRIAIS

Gerraint Jennings

P36

ENJOY

Exhibition at Moulin de Quétivel

P38

BRINGING HISTORY TO LIFE

Meet the Cooks at 16 New Street and Georgian Recipes

P40

EDUCATION

Education Programme and Inspiring a Zero-Carbon Future

P42

EDUCATION

Make Jersey greener

P43

EDUCATION

Create a pond

P44

ENJOY

International National Trusts Organisation

P46

DATES FOR THE DIARY



VIEW POINT

CHARLES ALLUTO
CEO NATIONAL TRUST FOR JERSEY

IN May 2015 the Crown kindly agreed to gift the foreshore and seabed to the people of Jersey. Overnight we all became stakeholders in an amazing marine environment amounting to 772 square miles, which is 17 times greater than our territorial land mass. Jersey's location at the confluence of the cold and warm temperature marine biogeographical region together with the warming influence of the Gulf Stream results in a habitat which can harbour and sustain both animals and plants normally associated with either the warmer waters of southern Europe or colder British waters. As a result we have an incredibly rich environment and our south-east coast has been designated a wetland of international importance under the Ramsar Convention.



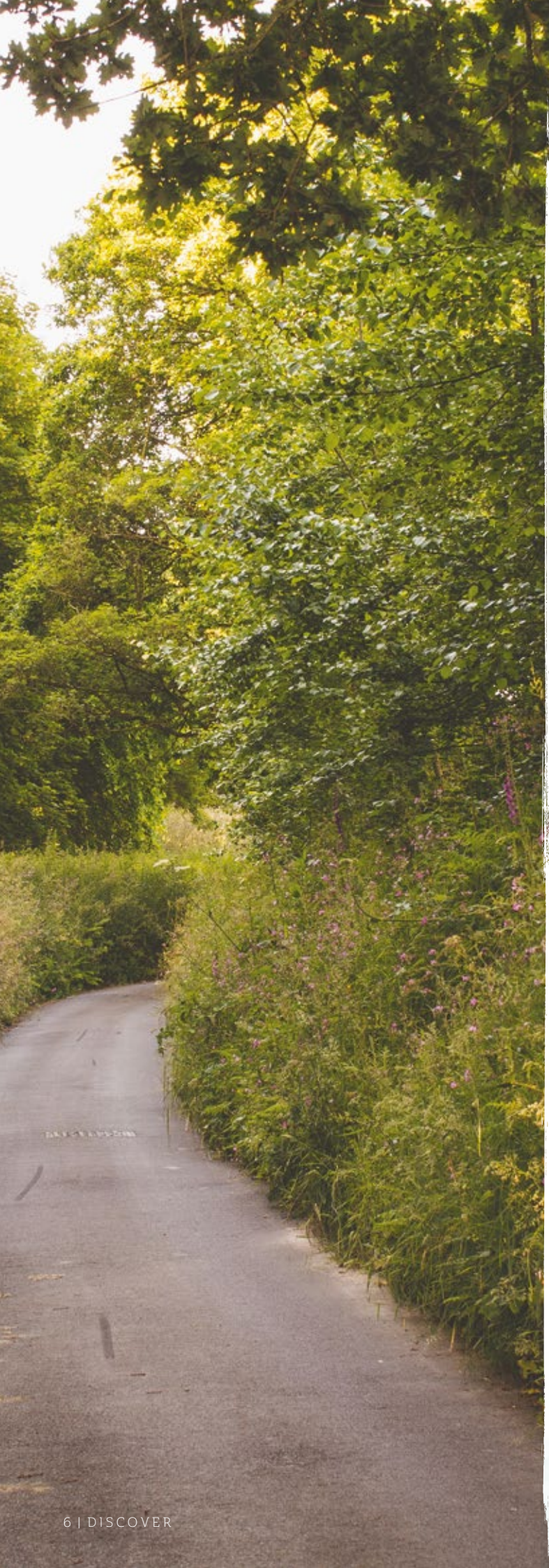
“ The value of this incredible natural resource could diminish very quickly if we fail to adopt a well-researched, and sustainable ecosystem approach... ”

It should therefore come as no surprise that our seas are also very productive sustaining a local fishing industry which generates circa £3m per annum, as well as supporting some of the French fishing fleet through the Granville Agreement. In addition shipping, tourism and recreation are valuable sectors to our economy, with marine wildlife tourism having increased exponentially over recent years, largely due to the natural beauty and the close proximity of our offshore reefs, such as the Ecréhous and the Minquiers.

However, over-fishing, (sea bass decline) terrestrial pollution (nitrates/phosphates), seabed damage (resulting in protection of south-east coast maerl beds), wildlife disturbance (the tern colony in the Ecréhous), potential offshore wind farms, additional reclamation and even talk of tunnels to France and Guernsey, are all very real threats to the long-term health of our marine environment. The value of this incredible natural resource could diminish very quickly if we fail to adopt a well-researched, and sustainable ecosystem approach, as advocated by the Integrated Coastal Zone Management Strategy (ICZM endorsed by the States in 2008) and more recently by the Blue Marine Foundation in terms of the Emerald Ring proposal. Indeed the Emerald Ring initiative only seeks to build upon existing Government policy as per the ICZM, which calls for the development of a network of marine and coastal protected areas, including no take zones and marine protected areas, subject to consultation and appropriate research. The complete destruction of our oyster fisheries in the 19th century and the collapse of the cod fisheries in Newfoundland, are historic lessons in the dangers of over-exploitation. Equally the value of no-take zones is clear to see. Around Lundy lobsters were six times more abundant within six years of the marine reserve being established, whilst off George Bank in New England scallops rose fourteenfold within five years. With strong spill over effects, the surrounding seas also benefit and deliver increased yields for fishermen. Fisheries in New Zealand, Japan and Newfoundland have all seen substantial increases.

Of course the old adage of 'what you don't know can't hurt you' is very pertinent to the marine environment as its inherent lack of visibility, mystery and immense scale has

resulted in practices we would never dream of condoning or implementing on Jersey's terrestrial landscapes. Why shouldn't dredging be subject to planning control given the wholesale habitat destruction it can cause? Surely it is a material change of use? Of course some will argue that such a view is 'extreme' but is it really unreasonable to adopt an equitable approach in terms of how we manage our marine and terrestrial landscapes. As we seek higher environmental standards from our agricultural industry, with the introduction of the Linking Environment and Farming (LEAF) marque, reductions in artificial inputs through precision application, improved hedgerow management, and protection of top soils with cover crops, I can see no reason or justification for not seeking appropriate environmental safeguards from those who fish in our territorial waters or use it for recreational purposes. The recent request by certain members of the industry to fish endangered blue fin tuna for commercial gain, or to refuse to engage with a more sustainable approach as advocated by Senator Lyndon Farnham, is an abject failure both to read the public mood and to recognise what happened in 2015. The marine environment does not belong to the trawler fleet, whether that be Jersey or French, it does not belong to Ports of Jersey, it does not belong to the States of Jersey, OneGov or our French neighbours, it does not belong to yacht, rib or motor boat owners, and it does not belong to Fisheries. The Crown gifted it to the people of Jersey and therefore we all have a legitimate right to question how it is managed and cared for on our behalf. Hopefully the new Island Plan will present a perfect forum for enhanced public engagement and debate. However, if the fishing industry and recreational users want public support for their activities, then they cannot simply rely on historic track record, aggrieved bluster, or indeed outdated agreements, but rather need to actively demonstrate that they are the worthy custodians of our marine environment who are caring for 'our assets' in a sustainable way. This will not only help secure the future of their respective industries and livelihoods by delivering a desirable, ethical and sustainable product, but also prevent the destruction of the very habitats and bio-diversity upon which we all inevitably rely.



In the NEWS

BRANCHAGE

In the past year there has been a noticeable increase in public awareness of what effects climate change will have on our lives and what we can all do to counter these. Though some of the changes needed will mean quite radical rethinking with regard to our lifestyles there are simple things we can do to improve our environment and reduce the negative affects we are having on the planet.

Steep declines in insect populations are of great concern as this affects all other life forms including our own. Planting trees, setting aside field strips to sow endemic wildflower mixes and sympathetically caring for our hedges, banques and verges are simple and effective ways of improving diversity especially regarding invertebrates. These nature highways play a crucial part in conservation and need to be enhanced and protected which is where ensuring that the local Branchage is carried out using the new guidelines comes into play.

Although there are sadly some contractors and private landowners still insisting on applying a scorched earth policy when it comes to how Branchage is undertaken the majority of people including many of the Island's farmers have embraced the new guidelines and helped make a significant and noticeable difference. A new leaflet showing best practice, which is included in this magazine, has been produced explaining the changes and benefits this will bring about long term and has been distributed to key sectors. The leaflet is also available from parish halls and explains how to conform to the Branchage Law while bringing diversity back into the countryside and enhancing our lives.



AARON'S MOBILE SHEEP YARD

BY AARON LE COUTEUR

The Rappa yard is an ingenious piece of engineering. They are used the world over (originally invented in Australia) by shepherds to attend their flocks efficiently and expediently. In essence a mobile yard does exactly what it says it does. It's a yard that we can tow from field to field, quickly unfold and set up (within 20 mins) and then use to attend to all the needs of the flock, from shearing to drenching to drafting. It's incredibly cleverly engineered and made from aluminium to keep it light weight.

To my eyes it's a thing of beauty. It's probably not the kind of thing that excites everybody, and I doubt we'll see it on Top Gear anytime soon, but to us it's an absolute game changer. Before the Rappa arrived we'd use a tractor and trailer to move steel hurdles from field to field and then have go back again with all the gear to get the job done. Often carting around the race was an evening job, done by tractor light, so this new engineered addition to the team has been simply incredible. The new yard is designed specifically for sheep, and I was amazed how quickly our Manx took to it, the thought that has gone into making the design sheep friendly is very apparent. Temple Grandin would be proud.

We have to work to incredibly tight margins, and so whilst this mobile yard will pay itself back in a very short period of time, we could never have afforded the capital outlay, but with this incredibly kind donation we have been able to make the purchase and invest in the future of Jersey's conservation grazing flock. Ensuring that their impact on habitats such as heathland and meadows across the island continues. We are humbled and eternally grateful to get this support for the project, which has made a huge difference.





PLANT A HEDGE!

Can't think what to buy for a birthday present? How about some hedge?

We are selling metres of hedge which we will plant for your loved ones, helping us to reach our aim of planting 30 miles of new hedgerows around the island. Your 'gift' comes with a lovely card and envelope and it is £5 per metre, so you can buy one metre or as many as you like!



For Luke's 4th Birthday his family wanted a lasting gift for Luke from his friends, that he could watch grow over time. So they contacted us asking about the possibility of planting trees with money donated from Luke's birthday. The decision was to offer the option of £10 per tree or £5 for a metre of hedge. The guests embraced this and Luke's gift fund meant that the Trust were able to plant ten trees and 9 metres of hedgerow. We are most grateful to Luke and his friends. This will be a legacy from all those who donated and something the island will benefit from in so many ways into the future. Thank you Luke, we hope that your idea catches on.

EMR METAL RECYCLING

The Trust was delighted to receive a cheque for £2,000 from the EMR Metal Recycling Community Fund.

The donation will go towards planting hedges around the Island which provides nesting, feeding and roosting opportunities for birds, bats, small mammals, reptiles and amphibians.

Hedges also provide a source of pollen for invertebrates, act as safe corridors for animals, protect against soil erosion, protect crops from extreme weather and help to absorb CO2.

The donation will enable the Trust to plant 400m of hedging.

Thank you EMR for your support.



(Above) Jon Parkes, Lands Manager for the National Trust for Jersey with Kerri Thomas, EMR Jersey Depot Manager, EMR Metal Recycling Jersey.

CONGRATULATIONS!



Rob Seagraves, Managing Director, Loop Business Services Ltd

Congratulations go to Rob Seagraves, Managing Director of Loop Business Service, and a Corporate Member of The Trust who completed his first ever marathon in Jersey.

Not only did Rob achieve his personal time target he also raised £682 which has been split between his two chosen charities; Jersey Hospice Care and The National Trust for Jersey Coastline Campaign.

Rob said "It really was a great day and lovely to see all the Island showing their support, it was a great atmosphere"

Thank you Rob for your support of the Trust.



Available now!

If you are looking for a unique present why not buy our new book 'Saving Plémont for the People' - a full colour 'coffee table' style book, it charts the history of the site from prehistory through the heady heydays of tourism, the campaign to save the derelict site from development to its ultimate restoration as a beautiful natural space.

Priced at £30, the book can be purchased from the Société Jersiaise Library and The Elms.

Le Moulin de Tesson

*The little museum you have
-probably- never heard of...*

BY ROBIN KELLY
PROPERTIES MANAGER

IT was a cold but dry and sunny December day when the Kelly family set off from Sandybrook on what we had optimistically called 'The Mill Trail'. We followed the route of the perquage path, alongside the brook that divides the parishes of St Peter and St Lawrence, heading up St Peter's Valley. Opposite the houses at Tesson Mews, we came across the Organisation Todt Power Station in Tesson Quarry, built by the Germans to supply power to the Island during the Occupation. Now used by Bel Royal Motors, you can just see the remnants of the original building. However, we were on a mission to look at a much older building, Tesson Mill, to discover the part it played in Jersey's industrial heritage.

There have been watermills in St Peter's Valley since the 11th century. In fact, at one time there were eight working watermills in the valley, ranging from Gigoulande in the north to La Moulin de la Cave in the south. All the mills were fed by the same stream which rose near St John's Church before discharging at Beaumont. The fall of the stream from the collecting pond above Gigoulande to the tail race below Tesson is about 200ft over a distance of about 2¼ miles, providing much-needed fast-flowing water. With many smaller streams feeding in along the route, this is one of the largest catchment areas in the Island.

It has always been important that the feeder and main streams were kept clear, something which was requested in a 1779 letter written by the owners of Quétivel, Gargate and Tesson Mills to the owners of properties upstream from their mills. To this day, keeping the waterways clean and clear is essential to prevent flooding in this low-lying part of the Island.

The first written record of a mill at Tesson was in 1274, when it was owned by the Pinel family. Since then, the mill has changed hands many times from private ownership to ownership by the Crown and back again. Tesson Mill was listed Grade II in 2015, acknowledging evidence of some construction from around 1670, as well as subsequent alterations circa 1816/19. It was in about 1832/5 that the buildings were extended to what we see today. It was the largest of all the mills in the valley and comprises five storeys, constructed from a mixture of granite and shale with brick window surrounds, under a slate roof.



Tesson Mill in St Peter's Valley: view of courtyard with two workers standing near horse and cart loaded with sacks, one man on top (Société Jersiaise)



The site can be spilt into seven areas:

THE MAIN MILL BUILDING

The mill building had four floors of industrial use as well as an attic. It was used for all the dry processes. Sacks of grain were delivered to the front of the mill before being hoisted up to the third floor. The grain – at various times, the mill has been used to grind oats, wheat, barley, cattle beans and maize/corn – was stored in hessian sacks, ready for processing on the lower floors. On the second floor, there were loading hoppers into which the grain was poured. The first floor had the grinding stones, where the grains were ground into flour as well as a centrifugal flour machine which separated the flour, bran and pollard in a revolving drum. The ground floor was where the finished flour was collected and bagged.

THE WATER WHEEL, WHEEL PIT AND LEAT

These combined to power the system that drove the machinery in the main building. The leat is a man-made watercourse,

created to direct water to a mill. The waterwheel is unique in Jersey as it is the only double-width wheel, with two rows of buckets. The wheel, made of green oak, is about 16ft in diameter and is the “overshot” type of wheel – the water in the leat is brought to the top of the wheel where it strikes the buckets and turns the wheel. The benefit of this design is that it will still work even when the flow of water is slow. The waterwheel was fully restored under the guidance of the Trust in 2006.

THE STEAM ENGINE ROOM (NOW A MUSEUM)

This was where steam power was generated when the water supply was insufficient to run the mill. This room contains the earliest remains of steam power left in the Channel Islands. The first steam engine was installed in 1834 and a greater-powered engine replaced the original a year later. It was at that time, 1835/6, that the present engine house was completed to accommodate the larger replacement steam engine. In the museum, you can see the cylinders of the condenser, the air pump and the hot well in the condenser pit. At ground level, the base stones for the cylinder remain as do the central support columns and the



Ian Rolls

flywheel bearing block. Looking up, you can see the entablature beam and the two spring beams, set into the ceiling. With the introduction of electric motors, steam engines gradually declined from the 1930s onwards.

THE MILLER'S COTTAGE

The cottage remains in residential use to this day, although it has subsequently been fully restored and modernised since construction.

THE WALLED COURTYARD

Looking through the tall green-painted wooden gates (the Trust's Holly Green) at the front of the mill, you can see the cobbled courtyard, surrounded by high granite walls. Here, coal was stored for the steam engine and the cobbles indicate that it was also previously used for a stable/cart yard. The courtyard walls enclosed the chimney, boiler house, sump and culvert and was an integral part of the working steam mill. The majority of these structures have been demolished but you can still see the base of the chimney near the west wall. Looking at the black and white photograph, you can see how much the chimney once dominated the site, towering over the mill. Today, the Trust is in the process of drawing up plans to create a covered lean-to area, on the footprint of the old buildings, where our collection of mill equipment can be displayed, along with interpretation boards and some benches to sit and listen to the peaceful sound of the mill stream.

THE PIGSTIES

The pigsties have had no renovation to date and remain as originally built. They are to the right of the mill entrance and have become small gardens used by the residents of the mill.

THE OUTER GARDEN

In 1908, the cottage was occupied by the Gilley family. It was described as having “a spacious yard, fowl run etc. and next comes the stables and a fruit garden”. It takes a fair bit of imagination to envisage these today – although the garden retains its high granite walls.



By the mid 1800s, the Gilley family owned or leased many mills in Jersey. They had arrived in Jersey from Devon, where their stepfather had been a miller. Of the three Gilley children, Edwin, Samuel and Elizabeth, both Edwin and Samuel became prominent millers in the Island. By the time Samuel bought Tesson Mill from Charles Pellier in 1893 for £1,000, the Gilley family had been tenants of Tesson Mill for over thirty years. In fact, the mill was nicknamed 'Gilley's' Mill'. The 1901 Census shows him living in the cottage along with five of his nine children as well as his servant, John Amy. The eldest boys were working in the mill with their father whilst John Amy was described as a carter at the mill.

Things changed dramatically when, on the night of 25 July 1908, a fire broke out in the mill. The fire started on the third floor, at the rear of the building, amongst the silk, which was used to screen the flour. Most of the mill was badly damaged. The Evening Post described the scene as 'Only the walls remain, the interior of the spacious building being one mass of ashes and debris'. Fortunately, the Gilleys had insured the building with the West of England Fire & Life Insurance Company and it was rebuilt in due course. Samuel Gilley sold the mill to The Jersey New Waterwork's Company (JNW) in 1934 although the Gilleys stayed on, as tenants, to run the mill. However, The Jersey New Waterwork's Company diverted water so many times that a 20 HP oil-powered machine had to be installed to allow the mill to operate!

In its heyday, when the mill had a full flow of water, it could be operational for 12 hours a day and was capable of crushing up to ten tons of oats in that time. During the First World War, the mill

ran at full capacity. However, production subsequently became uneconomic due to the cheap importation of flour. In 1940, when there was a shortage of fuel, considerable repairs and the clearing of the streams were carried out and the mill was brought back into operation. Wheat was imported from France but when supplies ran out after D-Day, the mill once again ceased production. After the war, the JNW Company rented the building to the Jersey Farmers' (Trades) Union. They installed an electric grinding machine, a hoist, and a modern crusher. This effectively made the water-powered machinery redundant. However, once crops such as potatoes, tomatoes, broccoli and flowers started to be grown in place of the less-valuable corn, less grain was grown, demand for the mill grew less and by the end of the 1950s, the mill only operated at most one or two days a week. Tesson Mill finally ceased milling in the 1960s. Jersey Water, who still owned the building, used it for storage but very little was spent on its maintenance and the buildings, waterwheel etc., gradually fell into disrepair.

In 1995/96, the JNW Company made a planning application to demolish the buildings and clear the site and it was then that the Trust purchased the mill. Acknowledgment must be made of the assistance of the JNW Company who, in exchange for a parcel of land, agreed a favourable purchase price with the Trust. A very generous bequest from Izette Croad, whose brother had been one of the workmen clearing the streams and ponds in 1940 to allow the mill to return to production, was used to meet the purchase cost. Funds did not allow the Trust to carry out restoration so a long lease was granted to a private developer who converted the mill into apartments, leaving the external

fabric of the building intact. The Trust retained the mill wheel, courtyard and the steam engine room. Externally, the waterwheel was professionally restored. The building was officially opened on 25 July 2008, 100 years to the day after the mill fire.

Now that the main mill building has been converted into privately owned apartments, only certain areas are accessible to the public. During the summer season, May to September, the waterwheel, courtyard and steam engine room are open between 10am and 4pm on Mondays and Tuesdays. Walk through the tall green gates and you will find yourself in the walled courtyard. Imagine the activity that would have been going on there when the mill was running at full capacity - sacks of coal being delivered by horse and cart, the coal being carried in to stoke the steam engine and the hiss and clatter of the machinery in the steam engine room itself. Today, with only the sound of the leat in the background, it is a very peaceful place to stop, look at the interpretation panels outside the building and then discover the displays in the museum before admiring the huge waterwheel. Inside the museum, you will find a scale model of the beam engine, full size replicas of the cylinder and flywheel, a display of some of the archaeological finds and a short film about the history of the mill. Having explored this fine example of an early industrial building, it will be time to resume the Mill Trail and head up the valley, either on the woodland path or via the cycle path, past the meadows where the curly-horned Manx Loaghtan sheep graze, to the next watermill, Le Moulin de Quétivel, for a cup of tea and a slice of delicious National Trust cake!

A PARK FOR ALL SEASONS

BY MIKE STENTIFORD MBE
JERSEY NATIONAL PARK

THE celebrations held on Sunday October 6th might now seem a little distant although, in so many poignant ways, they remain firm and clear in the memory of all those very important supporters who accepted an open invitation to participate.

In addition to marking the 10th Anniversary of the National Trust's magical 'Line in the Sand' demonstration, it also proved an ideal opportunity to likewise celebrate some long awaited positivity for the Jersey National Park.

Arriving at such a pivotal turning point has not been without its trials and tribulations for the Park's interim working group.

Despite official endorsement firmly attached to the Island Plan 2011, ongoing changes within the political structure have proved unhelpful in gaining a major degree of accepted recognition.



Due to persistent determination, however, acceptance of the Jersey National Park's true value has finally been recognised and rewarded with a generous four year grant from the Government Plan.

This financially encouraging show of confidence has now given the green light for scores of previously conceived aspirations.

The first of these 'essentials' has been the appointment of Jerry Neil as the park's newly appointed Park Officer.

In close alignment with a soon to be convened board of advisers, Jerry's administrative skills will oversee the initial stages of the park's long list of future aims and objectives.

Of equal significance has been the leasing of the Frances Le Sueur Centre, a beautifully timbered 25 year old structure now being hailed as the new information hub for the park.

Sharing this iconic landmark with Jersey Trees for Life, the centre is currently undergoing some seriously long overdue tender loving care and attention.

Complete refurbishment, both inside and out, is now well underway courtesy of a team of recipients of the Jersey Back to Work scheme. Generously covering the cost of all decorating materials is Island Insurance.

Following what's likely to be at least an eight-week closure, the Frances Le Sueur Centre will eventually say hello to the new spring season as the Jersey National Park information, education and events centre. Some might immediately question the local need of such a global brand as a national park. Should this be the case then it would be prudent, perhaps, to remind ourselves that wherever in the world they happen to be, National Parks are primarily recognised for landscapes that are remarkably precious and demanding of the strictest protection.

Most importantly, conceived as it was directly following the National Trust's successful 'Line in the Sand' demonstration in 2009, Jersey's National Park can be seen as offering an extra layer of environmental protection to an increasingly vulnerable landscape.

Officially recognised as an integral part of the Island's planning structure, its strict guidelines are paramount in relation to all applications for development within its current boundaries.

With an ever-increasing local population, radical changes to our coast and countryside seem inevitable yet, providing collective effort is both politically and publicly supported, the future added protection to a landscape considered as priceless can be assured.

As with any National Park, a sustainable regime of environmental management will be required which is why solid partnerships are essential.



By far the largest and most proactive stakeholder is The National Trust for Jersey, a revered charity that already owns and manages a high percentage of land within the park's current 2,145 hectares.

Together with the Government of Jersey's environment team, the combined efforts of such mutually determined partnerships will continue to protect, maintain and improve the natural character of the Island's coastline and its increasingly under-threat biodiversity.

It's probably true to say that there can never be too many charities, groups or individuals intent on delivering the very best of environmental benefits to the Island's wildlife-rich landscape. To continue with this ongoing process, the Jersey National Park is on track to develop crucially positive partnerships and shared initiatives with all likeminded organisations.

Armed with a surfeit of such joint positivity, achieving a safe and vibrant future for our natural environment can, and will, be collectively accomplished.



MOURIER VALLEY REWILDING.

A look at future plans and some of the challenges the Trust faces from its most ambitious tree planting project ever.

BY JON PARKES - LANDS MANAGER

THE PARTNERSHIP

Jersey Electricity and Jersey Water are jointly providing £40,000 towards the project which aims to offset some carbon and help Jersey towards its goal of being carbon neutral by 2030 as well as safeguard biodiversity by increasing the amount of woodland cover across the Island. Jersey Water is also a significant land owner in the valley and has kindly granted permission for parts of their land to be incorporated into the project.

The project is a joint initiative with Jersey Trees for Life, who will help facilitate the planting and also provide discounted tree whips and materials for the project.

TIMESCALE

Planting has already started, with staff from Jersey Water and Jersey Electricity eagerly getting the ball rolling by planting around 400 trees on 11 December.

The plan is to plant just over 6,000 trees in an area of around 39 vergées, which will be spread over three years. Continued management of the young trees, newly created grassland areas, existing hedges and paths will be undertaken for many years to come until the woodland has become established.

SPECIES

With already existing woodland in the valley and previously planted trees from Trees for Life's earlier project, there are already a few clues as to what trees might fare better than others in such an exposed location. But other factors have also contributed to deciding on suitable tree species.

Common Oak - '*Quercus Robur*'

With over 300 different species benefiting from it, the common oak is a standard and is always included with any new planting plan.

Silver Birch - '*Betula pendula*'

Along with oak, silver birch is recognised as a "pioneer" species meaning that it is one of the first trees to colonise a scrubby or succeeding habitat. Its fast grow rate is a characteristic that helps with this role and will hopefully also aid the early stages of this project to provide some protection for other trees. Its silvery-white bark makes it easy to identify and it is associated with fungi such as bracket fungus and the infamous white and red fly agaric.





Rowen or Mountain Ash – *sobus aucuparia*

Not a tree that has been widely planted in the countryside here in Jersey, but is often planted as an ornamental tree, along with its many exotic cultivars. The name mountain ash is given to the rowen due to its ability to grow out of even the most exposed “crag” in the harshest of locations. But it wasn’t just chosen for its hardiness. The berries are a staple for migrating birds and given the other conservation efforts in the area, including enhancing hedges, winter bird crops and the conservation grazing, the rowen might have a lot to offer despite its non-native status.

Scots Pine – *Pinus sylvestris*

Those with a keen eye may have noticed something of a “Caledonian” theme with the last few listed species and it’s fair to say that there has been some northern influences to the planting plan.

The Scots pine is another mountain species that you would again expect to thrive in windy, cold exposed places. There are those who may be concerned about the trees resilience to salt as they don’t always fare well on the coast, but Mourier Valley already has some lovely examples of Scots pine where they have found the right spot.

Interestingly, pollen from Scots pine has been found in the ancient peat beds around Jersey, indicating that it is definitely native, but no trees growing today are thought to be directly descended from those originally growing here.

Hazel – *corylus avellana*

Hazel is an understorey woodland plant, which grows in multi-stemmed ‘stands’. In this location, it may struggle to begin with, but as the canopy develops, it is hoped that it will find its niche little corners.

Once established, hazel will provide an early pollen source for invertebrates and providing they reach maturity, they can cross-pollinate and produce nuts for the squirrels.

Bird Cherry – *prunus padus*

In April, Bird Cherry produce a beautiful, heavily scented, white flower which is pollinated by insects and then develop into reddish-black cherries, which, as the name suggests, are favoured my birds.

Wild Cherry – *prunus avium*

Unlike bird cherry, wild cherry can reproduce by sending suckers from its roots.

Like the bird cherry, it has a beautiful flower which produces both nectar and pollen and is considered second only to the apple tree in terms of a resource for pollinators.

The cherries produced are a more familiar, dark red colour, but are often picked off by birds as soon as they become ripe.

There is some debate over whether or not bird and wild cherry are native to the island, but there is no doubt that they are fantastic trees for wildlife and have thrived in sheltered inland wooded valleys and in more maritime environments such as Mourier Valley, so should at least be considered naturalised.

Other Conifer Species, Monterey Pine – *pinus radiata*, Black Pine – *pinus nigra* and Lodge Pole Pine – *pinus contorta*

None of these species are native, but all have been planted previously around the island with a fair degree of success. Monterey pine being particularly prominent at the coastal ‘Pine Walk’ near

the RNL station at St Catherine’s. Mourier Valley already has a dwindling population of evergreens, which were once more evident. By introducing more in the planting plan, the Trust hope to provide more cones to attract squirrels and all-year-long canopy cover which may attract species such as long-eared owl who like to roost in conifers.

Sweet Chestnut – *castanea sativa* and Ash – *fraxinus excelsior*

Both have unfortunately been omitted from the plan, but down to availability rather than their credentials. Sweet chestnut is regarded as native here in Jersey, even though it is regarded as being introduced by the Romans in mainland Britain. It has become very common on the island and can be found at a number of exposed coastal woodland sites, including Mourier Valley.

Since 2018, importation restrictions have been in place to restrict the spread of Chestnut Blight – *cryphonectria parasitica*. Whilst some locally sourced sweet chestnuts will be planted as part of the scheme, they will unfortunately have to stay off the planting list as a main species until the restrictions have been lifted.

Similarly, there has been an importation ban on ash trees since October 2012 following the discovery of Ash Dieback (*Chalara fraxinea*) in a few trees in Jersey. Again, some token ash trees have been provided by islanders who have grown them from seed, but they are not available in large enough numbers to be included within the plan.



ACCESS

Fortunately, the new woodland already joins part of the North Coast footpath through a series of existing and managed paths and the conservation grazing area, making the site very easy for public access.

There is also scope for additional paths to be reopened which will allow those involved with the project, their families and all Islanders to watch the woodland develop.

As well as wooded areas, the new planting scheme will see marginal agricultural fields being slowly returned to nature, patches of open grassland providing new opportunities for wildlife, enhanced areas of scrub and dispersed with single standard trees that hopefully might attract and bring back declining species like turtle doves. As well as helping Jersey's climate change mitigation targets, it's the opportunity to actually increase biodiversity that equally excites us.

CHALLENGES

The most obvious challenge for the project is the exposure and extreme conditions that the trees will face as they establish. This winter has seen multiple gales and very heavy rain already, but the risk posed from prolonged periods of summer dry periods may propose an even greater threat. Ironically and rather worryingly, extreme weather patterns, an already noticeable symptom of climate change, are going to make growing trees more difficult in some cases.

Despite the proximity to a reservoir, the gradient of the valley slopes will make any necessary watering difficult. It is a long way back up with your watering can! The exposure will definitely limit the tree growth and whilst we have chosen

species that are more suited to those conditions, we have to be realistic about our expectations. There are many single oak trees on the north coast that have been stunted by the conditions that appear much younger than they really are. There may well be areas that are too exposed, but at the same time, as some grow, they will provide cover for other trees and some will be lucky enough to be planted in a relatively sheltered spot.

Rabbits could do a lot of damage if no protection was given to our young trees. On our standard trees, we are using 75cm tree shelters with stakes. Regrettably, we were unable to source biodegradable tree shelters for this project. But managing these, as well as cutting back grass and maintaining access have all been factored into this project and will be undertaken by the Trust, Tree's for Life and our volunteers and project supporters. As well as guarding the trees from hungry rabbits, the tree shelters also act as a mini greenhouses, allowing early seasonal growth and protecting buds from frost.

It has been suggested that there is undiscovered neolithic archaeology on site. The presence of Diorite stone, along with the apparent proximity and alignment with known "houges", suggests that there could be artefacts present. Adopting the precautionary principle, it is important to address this concern, which is why we are working with Jersey Heritage and the Société Jersiaise, who have planned archaeological surveys, before planting. Both organisations are also helping our team understand what might be hidden beneath and what should be done if anything of interest is found. While most of the land has been ploughed at some point in the last 20 years, and have been planted with potatoes, there

are still unworked areas that may still yield articles from the ancient past.

CAN YOU GET INVOLVED?

We understand that people will want to help. There is so much news about climate change at the moment, so it's no wonder people want to go out and plant some trees. The success of our recent Hedge Project is testament to this. That is why we want to offer opportunities to help through initiatives such as the Jersey Conservation Volunteers and corporate volunteer days. Although not everyone will be able to plant a tree over the next three years, everyone can visit, watch the trees grow and hopefully see the wildlife move back in.

While visiting the area there are things you can do to help -

- Follow the countryside code
- If you find a tree guard on the ground has, please pick it up and either dispose of it or replace it around the tree, if you can see where it came from
- Please don't walk in agricultural fields. As well as damaging crops you might be disturbing birds feeding on winter bird or conservation cover crops that do sometimes look like weeds
- Remember that to increase biodiversity, we need to provide wildlife safe places to feed, rest and reproduce. By keeping energetic dogs on leads, you can help ensure that this area, is an appealing place for nature to move into.

The Changing Face Of St Ouen's Bay

The following text is taken from a talk given by architect and environmentalist Richard Le Sueur at the National Trust Wetland Centre on 6 October 2019 to mark the occasion of the re-opening of the Frances Le Sueur Centre in Les Mielles de Morville, St Ouen's Bay. The building will be a headquarters for the Jersey National Park and is named after Richard's late mother. Frances was an active naturalist and environmentalist who kept up pressure on the States and other bodies throughout her life to look after our natural world.



THERE are probably several different talks that could be given on the changing face of St Ouen's Bay. The obvious talk would go through all the wonderful JEP Temps Passé black and white photographs, contrast them with Instagram friendly colour photos and we can all go away and congratulate ourselves on a job well done.

But there is still much work to be done - and the job of keeping up pressure on the politicians and planners is never ending. So as we are celebrating ten years since a 'Line in the Sand', and the repurposing of the Frances Le Sueur Centre into the new HQ of the Jersey National Park, I have put together a more personal perspective on the 'Changing Face of St Ouen's Bay'.

Frances Le Sueur was my late mother, I was born and brought up in the bay, and largely from old family slides from the last 30, 40, 50, 60 years, I have put together a talk picking up on various themes that deserve wider discussion. A warning first though, if you don't like small children you may need to leave now as they keep cropping up in the foreground.

We'll look at the landscape, how Early man saw it, and see how that compares with how we see it now. Then we'll look at the structure of the bay, at the forces that have put the flesh on the bones so to speak.

“When we are children the world seems vast and unintelligible.”

The first human species would have walked the area 250,000 years ago. Neanderthal men lived at La Cotte in St Brelade and at the Pinnacle to the north end of L'Etacq. If you can catch one of Dr Matt Pope's talks I thoroughly recommend you attend one of his lectures on Neanderthals. It is fascinating to hear how their lifestyle mimics ours. Their caves were the first 'homes' with separate areas set aside for food preparation, eating and sleeping. Their preferred spot for a cave was one with a view over the plains below where herds of animals could be observed from a distance. Dr Pope has described this as a 'time machine', whereby you observe your prey from a secure location and can work out in advance how to ambush and kill it. There must be something of this in the modern desire for a house with a view, or in this particular instance the urge to stop your car and admire the wide expanse of St Ouen's Bay from any of the vantage points afforded by the roads leading down to the beach.

When we are children the world seems vast and unintelligible. A tempting reaction as an adult is to think as individuals we are helpless in the face of development, and that nature stands in complete contrast to human activity. But in truth everything is connected and the landscape we see in Jersey has been touched everywhere by human hand. In Renaissance times they drew the contrast between nature untended by man and a new nature formed by our activities. Are the trees in a wood growing entirely as nature intended? Or are they the product of grazing patterns and selective cutting for firewood? How did early humans affect the landscape? In September I visited Sutton Hoo, the site of an Anglo-Saxon royal burial ground in Suffolk. The National Trust have recently added a 17 metre high observation tower to the site to give visitors an overview of the landscape which has been shaped by people for thousands of years. Just like St Ouen's Bay it has been used by the earliest hunter gatherers, prehistoric farmers, and military activity of the Second World War. The transparent interpretation panels overlay old views onto the current landscape, cleverly taking you back to former times. The Sutton Hoo tower reminds me of a rather more precarious structure built by the Ornithology Section of the Société Jersiaise at St Ouen's Pond in the 1960s. The purpose was not just to observe birds but to work out how to drive them into traps for catching, ringing and release.

The greatest impact on St Ouen's Bay in living memory would have been the construction of the Atlantic Wall by German occupying forces during the Occupation. The entire area would have looked like a Martian landscape with every inch of ground turned over to military use. Thousands of tons of construction materials were brought into the bay to construct and to cover over the many fortifications. There were excavations too in the form of canals to extend St Ouen's Pond to the north and south as anti-tank traps. Strong bunkers were built on the hills leading out of the bay with the intention of turning the hinterland into 'killing fields' if the Allied forces somehow managed to scale the sea walls.



“ Conservation is not about preservation: it should be about doing really creative things ”

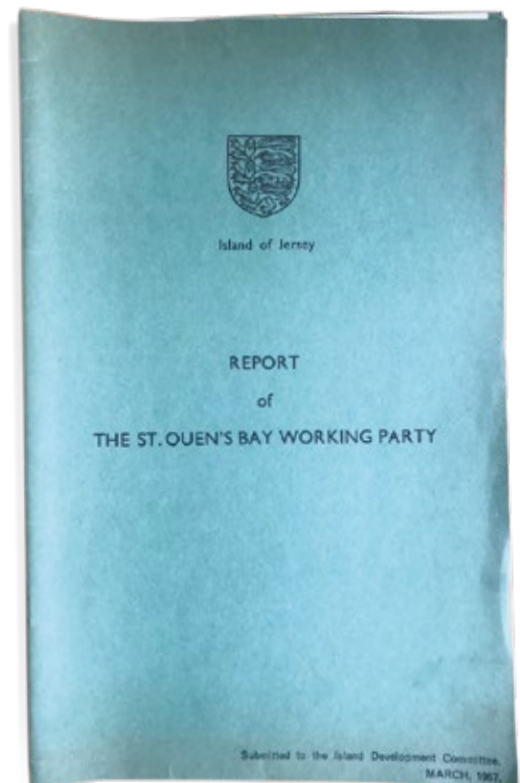


The remains of these works formed the background to my and my brother's childhood, searching for items to 'recycle' on the St Ouen's Parish dump that rapidly filled in the North Canal. On winter tides the scouring action of the waves exposed the footings of the sea walls and the long lines of timber posts stretching out to sea. La Rocco tower was damaged and in danger of collapsing into the sea until rescued in 1968 by a combination of the Association of Jersey Architects, the Société Jersiaise, the National Trust. They mounted a successful fund-raising campaign which was matched by the States who did not want one of their finest bays despoiled by tons of granite rubble.

Less care was taken over the state of the sand dunes though, with cars allowed to drive everywhere without restriction. Elm trees were a feature in the landscape until the devastation brought by Dutch Elm disease. My mother was the first to spot this in elms on Mont Matthieu. In the background of some of these photos you can see smoke rising from some of the seven dumps operated by the States in the bay in the 1970s. There were green waste dumps (on which cannabis grew from discarded bird seed), offal dumps, tyre dumps, etc. Some days palls of black smoke filled the bay. Extensive gorse fires were also commonplace, devastating to fauna and flora at the time but nature always fights back.

Episodes of Bergerac are always interesting to mine for views of old Jersey, but we have had feature films made here too. One such was *Eaux Profondes* (Deep Water), a Patricia Highsmith novel filmed in the Island in 1981.





Other photos I have show extreme weather events: a veritable inland sea surrounding Le Tour Carrée in the middle of the bay, the beach and the Five Mile Road covered in spume (harmless organic matter created by the agitation of sea water), massive waves at Le Pulec before and after the building of the sea wall, and the upending of huge conifers after the Great Storm of 1987.

To conclude, conservation is not about preservation: it should be about doing really creative things. I would date the major event in the recent history of the bay back to the report the States of the St Ouen's Bay Working Party in March 1967. This set aside the recommendations in the earlier Barrett Plan of 1962 which included a new town. Instead it proposed a comprehensive system of landscape restoration which with some up and downs along the way we can now see and appreciate in all its glory.

A Wave of Support for the **COASTLINE** CAMPAIGN

BY CHARLES ALLUTO

As many members will be aware the Trust set itself an incredibly ambitious target on the occasion of its 80th Anniversary in 2016, when it pledged to seek to protect another 1,000 vergées of unspoilt coastline within the next 20 years. Undoubtedly, progress has been a tad slower than we would have hoped, but over the last 18 months, the Trust has received some amazing support for this important objective.

Perhaps the most significant acquisition was the purchase of just over 11 vergées of coastal agricultural land at Pine Walk in St Catherine's Bay for the sum of £112,200. When the Infrastructure Department decided to put this land up for sale, we were immediately approached by a private benefactor, who wished to ensure that this important 'gateway' to St Catherine's Bay was permanently protected. With such financial backing and the wholehearted support of a number of States Members, we were able to successfully argue that the land should come into the care of the National Trust. Discussions then became protracted regarding the maintenance of some minor parish drains running under the land, but the Trust took the view that safeguarding this land was the priority and the contract of sale was duly completed in April 2019. Since then tree surgery works have been undertaken to secure the long term future of the pine trees, and the fields have been leased to Jersey Hemp on a three-year agreement. The Trust is delighted to now have a foothold in this significant coastal area, which has largely remained unspoilt, whilst in the care and guardianship of the States of Jersey.



Remaining in the east of the Island, the Trust was equally delighted when Philip and Jurat Sally Le Brocq agreed to place a restrictive covenant in favour of the Trust on a large field by Rocqueberg in St Clement. This increasingly important green space is now protected for ever from development, whilst the land can continue to be enjoyed by the Le Brocq family for generations to come. Restrictive covenants or protection agreements are incredibly valuable tool for the Trust, delivering protection without the burden of maintenance, whilst also enabling families to retain outright ownership. In such cases the Trust is also happy to draft contracts and cover reasonable legal expenses, so as to ensure that the whole process is relatively hassle free.



Heading west, the Trust was approached in late spring by a private landowner, who wished to dispose of a small strip of coastal duneland amounting to around a vergée and located adjacent to Barge Aground in St Ouen's Bay. The vendor was keen to ensure that the land would be protected and that its open nature would not be compromised through fencing. The Trust was able to give the necessary contractual assurances and a very reasonable price was agreed between the parties', thereby enabling the Trust to further consolidate its holdings along the coastal strip. Before the contract was completed the Trust entered discussions with the States Law Officers regarding the boundary and a practical agreement was reached which secured each parties objectives, namely access for maintenance as well as permanent protection from inappropriate development.

adjacent to the Cutty Sark and the other a little further to the north. The latter includes part of a German bunker, although the bunker entrance is located on public land! As ever it is a considerable honour and a privilege when people decide to gift family owned land to the Trust, and we will work hard to ensure that Mrs Bazire's faith in us is well founded.

In this respect the National Trust will be working with our volunteer, Karin Taylor, (see pages 30-31) to ensure that future Island Plan policies fully reflect the law as it currently stands.

These recent gifts, acquisitions and legal agreements have in total secured the future of just over 20 vergées of coastal land, which may seem a long way off from our target. However, underlying each contract was the clear desire for these coastal areas to be afforded permanent protection and this can only bode well as we continue to approach and engage with landowners about the future care of their coastal holdings. In addition none of the above acquisitions would have been possible without the generous support of our donors and sponsors. Each month we still receive a regular number of donations by standing order for the Coastline Campaign, as well as one-off cheques, for which we are enormously grateful. Hopefully our supporters can see that their donations truly do make a difference.

As we enter a new decade the Trust will also be re-establishing a new Coastline Campaign Working Party chaired by Celia Jeune, whose passion for protecting our coastline, was key to helping us safeguard Plémont. We have an ambitious target to deliver but with your support it is eminently achievable, as so eloquently advocated in our Annual Report from 1946:

"If you do not own a beauty spot which you can give to the Trust, see if you can buy one; if you do own a beauty spot and do not wish to part with it immediately reserve a life interest...if you know of anyone who owns cliff land get them interested in the Trust. Remember this is your Island, by inheritance or by adoption and man can mar beauty more quickly than nature can make it. It is up to you to do what you can."



At around the same time we were contacted by the legal representatives of Margaret Bazire, who had generously decided to gift two strips of coastal land in St Ouen's Bay to the Trust. Amounting to just over 4.3 vergées, one plot was

Our Coastline Campaign petition in which we sought to encourage people to emulate a 'Line in the Sand' by creating a virtual line around the whole of the Island, has had a somewhat mixed response. Whilst 5,000 signatures have been secured to date, it is clear that the petition would have benefited from greater clarity of purpose, although we hope that it may continue to attract signatures in the run up to the drafting of the new Island Plan. Above all we have sought to highlight the importance of the Planning Law, which clearly states that one of its objectives is to keep the coast in its natural state.

How can you help the Coastline Campaign?

1. Sign our petition and encourage your friends and family to do likewise
2. Consider making a regular monthly donation from as little as £2.50 a month
3. If you have any coastal land or know someone who does then please encourage them to consider a restrictive covenant. Email charles@nationaltrust.je for details

HEDGE FUND DELIVERS TEN MILES OF HEDGEROWS IN YEAR ONE

BY CONRAD EVANS
HEDGE FUND PROJECT COORDINATOR

FOR some time the National Trust had been considering how best to improve the poor quality and lack of connectivity between the hedging and tree elements of Jersey's hedgerows.

With limited time and financial resource to hand, it was decided in December 2018 to approach The Jersey Royal Company to see if they would be interested in a new 'hedge fund' partnership. With a rental portfolio of over 8,200 vergées, the project would benefit from the Company's network of land owners, as well as potentially utilise their existing staff resources and equipment. Constructive discussions ensued with land manager, Ian Le Brun, whose enthusiasm and input was invaluable, and within a short period of time a project framework had been put in place. A target figure of 20,000 plants, with the greater emphasis on hedging species, was agreed, amounting to potentially ten miles (15 km) of new habitat.

The big challenge was now to find the funding to cover labour costs, including a project co-ordinator, as well as trees and materials. Fortunately by August 2019, The Roy Overland Charitable Trust and a generous private benefactor had kindly provided the majority of the funds, with Countryside Enhancement Scheme contributing £5,000 towards the cost of the trees. I was appointed to co-ordinate the project and work immediately began on surveying potential planting locations and boundaries. Negotiations with landowners, subsequently followed, all ably assisted by Mr Le Brun.

It was agreed that the area of focus for planting for this pilot project, would be from the Zoo eastwards to Fliquet. This was based upon research and a report by the Natural Department indicating that



this was a priority area for increasing wildlife and habitat connectivity.

To coincide with the availability of labour from The Jersey Royal Company, it was necessary for planting to commence much earlier in the season. The Trust was able to secure cell-grown trees from the Woodland Trust, but stormy seas, missing tree health passports, incessant rain and elusive tree spirals proved to be quite a challenge. However, within eight weeks of planting between October and December, we managed to plant 15,000 whips. Working from 7am to 5pm, literally from dawn to dusk five and a half days a week, the team made rapid progress and their considerable efforts were clear for everyone to see.

With The Jersey Royal company's labour no longer available after Christmas, we have been working hard to complete the planting for this winter and meet the target of 20,000 plants. Various sources of additional volunteer labour have been found including three sessions from

Standard Bank who have planted over 600 whips. The Jersey Conservation Volunteers have also put in a good shift by adding 700 whips to the total. Members of this group and other similarly minded people have now put their names forward as regular volunteers to assist with additional morning and afternoon sessions. Social Security's Back to Work scheme has also made a valuable contribution by planting over 1,100 whips in four days, thereby helping our environment, as well as learning/experiencing new skills and tasks. It is hoped that the remaining 2,500 whips would have been planted by the end of February.

Some on-going maintenance will be taken care of by The Jersey Royal Company and a number of other sources of labour so the saplings have a better chance of survival. Ensuring the hedges are dense, thick and bushy is another key element of the Project as it will make them more productive and effective in all the various roles they play. The opposite of this is what we tend to see at present – tall, drawn up individual trees

with lots of growth on top but bare at the bottom that lets the wind whistle through offering little for wildlife and the human population alike.

The project will be more environmentally friendly with the use of biodegradable spiral guards to protect the small whip sized plants from rabbits. Supplied by a UK firm Green-tech, they are new to the market and the Island and will greatly reduce the amount of plastic that is discarded in the natural environment. Once the spirals degrade into the soil in four to five years they are broken down into harmless polymers and lactic acid by micro-organisms and eventually into a small amount of CO₂, water and humus. This ground-breaking material has been awarded international recognition and product accreditation for protection to the environment.

Undoubtedly this pilot project has been a bit of a steep learning curve especially given the challenges of planting so much earlier in the season, but it has excelled our

expectations in so many ways, including the amount of hedgerow planting that has been achieved in such a short period of time. It goes without saying that we are enormously grateful to our partners, funders, staff, volunteers and by no means least, the landowners, who have enthusiastically embraced the whole project. Thoughts are already turning to the planting season for 2020/2021 and our Hedgerow Gift scheme has successfully raised £4,000 towards year two of the project. However, there is still a lot to achieve and if you would like to help with the project then please consider becoming a planting or maintenance volunteer, or alternatively purchase some metres of hedgerow as a gift for friends and family. It would be amazing to think that within five years we could have planted over 50 miles of hedgerows in Jersey.

(Below) JCV / Standard Bank staff at work / a newly planted hedge at Faldouet, St Martin



HEDGE FUND DIVIDENDS

The planting of native hedging and trees will first and foremost improve the landscape by enhancing the small and compact patchwork nature of the fields and reinforcing boundaries and historical features. Gapping up fragmented hedges will increase connectivity which will be beneficial to numerous species of bird, insect, mammal and invertebrates that will use the additional hedging and trees to their advantage for habitat, breeding sites, food source and safety from predators. The agricultural community will also benefit from the project due to the increase in crop production, reduction in soil erosion, filtering of particulate are pollution and making field boundaries more stock proof and robust. Although it is a medium to long-term benefit, the planting of trees and hedging will also lock up CO₂ from the atmosphere, in line with the Island's commitment to reduce its carbon footprint. Mature hedges are effectively rows of mini pollarded trees with a length of 100m sequestering 120kg of carbon dioxide a year whilst also offering the other benefits previously mentioned.



Annual Dinner

Friday 24 April, St Brelade's Bay Hotel

THE National Trust for Jersey Annual Dinner for members and their guests will follow the Annual General Meeting which is taking place at 6pm.

We are delighted to announce that our guest speaker for the evening will be Rob Stoneman from Rewilding Europe.



Rob started his conservation career reconstructing climate change over the last few thousand years from records contained within peat bogs. After completing his PhD – and horrified by the destruction of precious peatland systems – he worked for the Scottish Wildlife Trust, running a European LIFE project to develop a conservation

strategy for Scotland's lowland raised bogs. After this, Rob worked in a variety of senior positions within the British Wildlife Trusts, as Chief Executives of Sheffield and Hampshire Wildlife Trusts, a stint as Director of Conservation with the Royal Society for Nature Conservation and latterly 13 years as Chief Executive of the Yorkshire Wildlife Trust.

Rob's 26-year career with The Wildlife Trust spanned all conservation disciplines – marine, river, upland, grassland, heathland, woodland and urban wildlife conservation. He has always maintained a deep interest in peatland conservation, travelling the globe to research and advocate for peatland restoration. In 2009 Rob set up the IUCN-UK (International Union for Conservation of Nature) Peatland Programme, which has spearheaded the restoration of Britain's peatlands.

Rob has travelled extensively and loves to watch birds, walking and cycling in wild countryside, and meet different people. He holds a passionate belief that a wilder Europe would allow us to resolve some of our most pressing issues – from climate change to ecosystem collapse – and create a new prosperity

for a rapidly changing continent. Rob started at Rewilding Europe on May 1, 2019 with huge enthusiasm to scale up rewilding in northern and central Europe.

Reservations for the three course dinner can be made by returning the application form contained in the magazine together with a stamped addressed envelope and a cheque payable to the National Trust for Jersey for £35.00 per person. Please note that the price does not include any wine and this can be purchased from the bar prior to dinner.

Tickets can also be purchased at the Trust by credit or debit card. Please call Donna on **483193** or email **donna@nationaltrust.je**

Members and guests should arrive for a pre dinner reception commencing at 7pm in the restaurant. Dinner will be served at 7.30 pm. Dress code is lounge suits.

If you wish to stay overnight, St. Brelade's Bay Hotel is kindly offering National Trust Members special rates on a bed and breakfast basis as follows:-

Menu

Glass of Prosecco or orange Juice on arrival

Duo of Seasonal Melon and Parma Ham
Served with a Spiced Fruit Chutney and Toasted Brioche

Or

Button Mushroom and Tarragon Soup
Served with Wholemeal Croutons

Garlic Roast Rack of English Lamb
Served with a Jersey Black Butter Sauce and Sautéed Beans

Or

Half a Cold Jersey Lobster and Atlantic Prawns
Served with a Mixed Salad Garnish and Jersey Potatoes

Or

Herbed White Wine Risotto
With Griddled Green Asparagus, Capers, Mushrooms and Mozzarella

All main courses served with seasonal vegetables and potatoes

Apple Tart
With Apple and Blackberry Salad and Crème Fraiche

Or

A Selection of Artisanal Cheeses
With Home Made Pecan, Black Butter and Apple Soda Bread, Chutney
and Crackers

Coffee and Mints
£35

MEET YOUR Guide



SUE HARDY
BLUE BADGE GUIDE

SUE Hardy is probably one of the best known guides in the Island, having been leading walks for over 30 years. Having trained as a Blue Badge Guide in the mid-1990s, her experience has mostly been on foot, leading guided walks around the town and harbours, but mostly on rural routes, as well as occasional coach tours.

"I cut my teeth leading Members' outings for The National Trust" Sue said, remembering the days when two or three coaches would take large groups on visits to chosen properties, or for walks through NT lands. "Those outings were very popular, and would usually end with tea in a suitable hotel, enabling members to get to see the Trust's houses and property, and to get to know each other. However, the overwhelming success eventually meant there were limits to how many we could accommodate, so Heritage Open Days became the easier option."

Sue's long association with The National Trust began as a volunteer at Le Moulin de Quétivel in the 1980s where she introduced free visits for schools, enthusing hundreds of children who would then return, bringing their families, fostering a life-long interest. Due to the traffic near the mill, the routine was to meet the children at the mill pond, and walk them through the woodland path (releasing their initial energy!) before taking them all around the mill explaining how it worked. The teachers really appreciated how much

inspiration for art, maths and other skills could be attached to a visit, and the mandatory 'thank-you letter-writing' as an exercise (many with lavish illustrations) brought pleasure to those on the receiving end!

A huge number of Islanders turned up at Morel Farm for the first outing of the Jersey Walking Group in October 1990. Sue led this 'army' of walkers around St Lawrence - passing Le Rât, and the then newly acquired Hamptonne as they circled through Waterworks Valley. Together with Mike Stentiford and Beth Lloyd she co-authored the book 'Island Walks' - which seems to have got everyone on their feet.

Always a lover of the great outdoors, Sue grew up in 1950s St Ouen - learning local folklore from her mother, and 'making castles in that wonderful sand at Grève de Lecq'. At a time when there was less traffic, she had the freedom to cycle everywhere, went surfing before the big-boards era, and was lucky enough to have a pony to take her further afield, discovering remote corners and observing nature. Her memory of how relatively unspoiled the Island was then drives the urge to protect the coast and countryside.

Commercial activity in the world of tourism saw the introduction of regular guided walks around the countryside, including energetic all-day outings along the cliff paths, encompassing local history and entertaining the groups. "One of

the most popular was from Corbiere to St Aubin, visiting St Brelade's Church and stopping for lunch beside the beach before continuing up the steep path to Portelet Common, always a blaze of colour in the summer with purple heather and golden gorse creating a tapestry across the green." So many feet have tramped those paths, they are now very well defined. Jersey Tourism's 'Walking Weeks' attracted quite a following, with people planning their holidays each spring and autumn.

Sue's wide interests range from agriculture and architecture, castles, churches and butterflies to wildflowers, with most of the alphabet included - and eventually focused on L for Lighthouse, and M for Maritime history. Regular guided tours of Corbiere's famous lighthouse started in 2005, and tours are due to begin again this spring.

"The work of a Blue Badge Guide suits me very well" Sue said, "I enjoy meeting people, and can tailor a tour to a particular interest - from a group of Slovenian potato-eaters to Americans and others from New Zealand and Australia tracing their family trees back to the original settler from Jersey." Jersey has also welcomed many newcomers who are keen to discover the extraordinary landscape and peculiarities of the Island and its heritage - what better way than to join one of the guided walks in the 2020 programme?

My Jersey

FRANCIS BINNEY
MARINE SCIENTIST

I have the best job in Jersey. Actually I probably have the best job in the world based on the fact that being in Jersey is obviously better than being anywhere else and adds at least a tenfold multiplication factor to job satisfaction.

So why do I make this outrageous claim? I work as a Marine Scientist and Fisheries Officer for the Government of Jersey, one of a team of six permanent staff in the Marine Resources Section. My days are split between boat, seashore and office. When out of doors we are generally either conducting enforcement or scientific research work but also get to do the odd weird and wonderful things like escorting the Lieutenant Governor's inspection of the offshore reefs or, less glamorous but perhaps of equal gravity, removing the bodies of Manx Loaghtan sheep from the north coast cliff base after they were sadly chased off the edge by a dog.

Now in fairness we can't be outdoors every day and the autumn and winter of

2019 was particularly inhospitable but with an array of amazing projects to work on there is never a shortage of interesting tasks indoors. I am lucky enough to be the officer assigned to the Ramsar Management Group where I get to work with some of the Island's most passionate and engaged marine stakeholders to further the principles of 'wise use' in our four Ramsar sites. I also have the privilege to work on policy and legislation development, partnering with industry and conservation bodies to help drive sustainability in the marine management agenda. Getting to work with everyone from oyster farmers to trawlermen, kayak guides to dive surveyors is a great opportunity to get to really understand our island's seas and coasts.

Perhaps most importantly though is the 'in Jersey' element that is special to me not just as the place I grew up but the place I met Kate, my gorgeous wife, and where we are lucky enough to be raising our three daughters. Not a day goes by when

I am not grateful either for the family I have, the place I live or the work I do. Now assuming you have not already given up reading this in general disgust I will say that not everything is always plain sailing. Just as the sea can pile up into waves with the turning of the tide so can life and I have dealt over the last few years with cancer, depression, a seven-week premature child and all the other challenges that the busy lives of working parents in an expensive economy bring. However, life on this rock is still paradise and I can't imagine having got through what I have and still have found the enjoyment from family, work and life overall where it not for the setting of Jersey and working for what I truly believe in.

JERSEY ISLAND PLAN REVIEW





ISLAND PLAN 2021-30

The National Trust for Jersey has always recognised the immense importance of adequate planning policy and has been instrumental in campaigning for zoning and land use policy since the early 1950s.

In such a densely populated island it is clearly evident that robust planning policy is crucial to ensuring that Jersey strikes the right balance between a sustainable economy and safeguarding its rural character, sense of place, natural environment and rich built heritage. With this in mind the Trust has always sought to engage with the planning process actively and constructively, and has very much welcomed the opportunity to play a key part in the consultation process for the new Island Plan 2021 – 30.

The Strategic Issues and Options Consultation in autumn 2019 covered a wide range of issues of concern to the Trust and gave us the chance to shine a spotlight on what we consider the Island needs in order to develop a robust framework for truly sustainable growth.

Our priorities are:

- The concept of sustainable growth should be clearly defined in the plan and should deliver housing growth whilst maintaining the Island's natural beauty, natural resources, historic and cultural assets and general amenities, its character and physical and natural environments. The plan's policies and proposals should be fully costed, timetabled and adequately resourced so that key objectives are finally delivered as opposed simply to being aspirational.
- The spatial strategy should concentrate new development in St Helier and the main settlements and should protect the countryside. It is essential that there are strong guidelines for future development, in terms of site selection, layout and design, and that these are based on thorough analyses of landscape and townscape. Stringent criteria are needed which would guide any new development to the most appropriate sites and would require high standards of layout, design, materials and landscaping in order to maintain character. The principle of environmental net gain should be embedded, along with heritage-led

regeneration, public open space provision and accessibility.

- Policies for the Green Zone, Green Backdrop Zone and Shoreline Zone should be upheld and the Coastal National Park zone should be strengthened and protected, with an appropriate management system being introduced. The National Park should be extended to include the areas that are an essential part of its setting, including the marine environment.
- The new Island Plan should embrace a heritage-led approach to development. It should finally deliver conservation areas, where special character will be preserved and enhanced, and should promote careful and sensitive regeneration which would capitalise on St Helier's historic, architectural and cultural character.
- The Plan should adopt a truly sustainable approach to minerals and waste, water supply and energy generation.

All the responses to the Strategic Issues and Options Consultation have now been collated and summarised by the Island Plan Review Team and published in a Findings Report. The next stage of the process will be the publication of further detailed studies for example landscape character, a sustainability appraisal and the detailed consideration of submitted sites. The draft Island Plan is due to be published in mid-2020 and there will then be a further period of public consultation, followed by an independent examination in public. The final plan is expected to be published and adopted in early 2021.

The National Trust for Jersey will engage fully in the Island Plan process and encourages its members and supporters to respond to future consultations. Full details of the process can be found on the Government website.

<https://www.gov.je/PlanningBuilding/LawsRegs/IslandPlanIslandPlanReview2021to2030/Pages/index.aspx>

- IN THE -

Spotlight



We recently caught up with Karin Taylor, Head of Planning at National Trust for England, Wales and Northern Ireland who is volunteering in the Island.

What made you decide to pursue a career in planning?

From junior school onwards I had a passion for geography – for people and places – and a great curiosity about the world and deep interest in conservation. I wanted a career that was close to geography, but teaching was out, and town planning was out: I had grown up in the 1960s when planning was all about new towns and tower blocks. However, my tutor when I read geography at Southampton University introduced me to the concept of rural planning. I did my undergraduate dissertation on conservation areas in north-west Kent, and thought that to be paid to do work like that would be perfect. I went on to do a postgrad course in Town & Country Planning at Manchester University, then became a policy planner in local government. The rest is history. And yes, I did get to designate conservation areas, and be paid for it!

How valuable is planning for the conservation of our natural and built heritage?

The town and country planning system in the UK sprang out of the conservation movement of the late 19th and early 20th centuries, and the National Trust was at the forefront of the campaign to regulate land use and development in order to safeguard and protect the places that people regarded as special. Planning has been and remains inextricably linked to the conservation of our heritage especially in countries such as ours where development pressures continue to increase. Land is a finite resource, fashions come and go, and without a planning system the anchors that we have to our cultures and our past and to our environment would too easily be swept away.

Would you consider yourself to be a townie or a country bumpkin?

I was born and brought up in south-east London so sadly started out as a townie but my heart always lay in the country. My grandparents lived in rural Lancashire. I escaped the metropolis as soon as I could and have now been living in the same village in Hampshire for 25 years. Work regularly takes me up to London and I generally have to dress and act the part, but on occasions do wear my National Trust fleece with pride on the London Underground! So, I suppose I'm a hybrid.

Do you think a townscape heritage initiative would be good for St Helier?

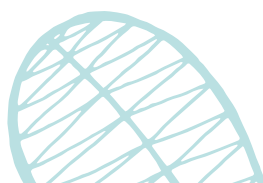
I think the clue's on the tin here! As a planner I like things to be organised rather than left to chance. A townscape heritage initiative involving truly collaborative working between the government, the voluntary and commercial sectors, adequately resourced, could be a springboard to focus efforts on reinvigorating St Helier by safeguarding and enhancing its townscape.

Do you think NIMBYs have a role to play?

When once writing a new local plan I was sent a petition calling for more affordable housing in a particular village. One of the signatories had added next to his name 'but not near my house!' Nimbyism of that type is unhelpful. We have to be reasonable, and we have to provide the housing that is needed. Most of us have children who need or will in the future need their own homes. However my mantra is 'the right development in the right place' and there is a role for people in scrutinising plans and holding developers and decision-makers to account. As a policy planner I firmly believe that the time to get this right is at the development plan stage and I also believe that high-quality development (which doesn't have to mean 'expensive') goes a long way to alleviating people's fears. Change is a scary thing and people need to be helped through it.

“What makes Jersey unique and special for me is the unique fusion of French and English culture and its superimposition onto the island landscape, with the all-pervading close proximity of the sea.”

KARIN TAYLOR





What do you think defines Jersey's sense of place?

What makes Jersey unique and special for me is the unique fusion of French and English culture and its superimposition onto the Island landscape, with the all-pervading close proximity of the sea. The field patterns, the settlement patterns, the cliffs, the bays and beaches, the cows, the potato crops, the granite. And the warmth, both in terms of the people and – well, doesn't the sun always shine?

St Ouen's Bay or the North Coast?

Ooh! My favourite approach to Jersey by plane is from the west, when the tide's out, and the afternoon sun is making the surf and the wet sand sparkle. I'm drawn back down to the bay where I can spend a happy hour mesmerised by the incoming tide. A near-deserted St Ouen's Bay on a sunny winter day is hard to beat. But the cliffs and bays of the North Coast are lovely too.

The City of Bath or Milton Keynes?

Milton Keynes is an interesting academic exercise in 20th century town planning, but it has to be Bath for me. The stunning Georgian terraces and crescents with the higgledy piggledy rear elevations; the honey-coloured stone, the squares, the gardens, the river, the skyline, the shops, the baths – what is there not to like?

3 key priorities for the new island plan?

- A well-balanced and sustainable development strategy that sets clear expectations and includes comprehensive guidance to steer the right development to the right place, with sensitive urban development and expansion teamed with limited extensions to key rural centres.
- The introduction and actual designation of conservation areas to protect and enhance heritage in urban, rural and coastal locations.
- The protection of the coastal areas through the reinvigoration and strengthening of the Jersey National Park/Coastal National Park.

Should the regeneration of St Helier be heritage-led or housing-led?

There is no reason why it can't be both. My preference is always for heritage – and landscape-led approaches to planning and development. There is plenty of evidence now to support this in terms of sustainability, quality of life and sense of place, and commercial sense.

High-rise or low-rise?

I think my answer to the first question gives this away! Whilst high-rise may seem to make sense in terms of land-take, the need for associated open space means this is marginal in respect of high-rise housing. Private open space is important to many people. I've seen too many sink estates and too much urban green wasteland to think high-rise really works except in exceptional circumstances. I say 'give people gardens!'.

ACTIVITIES TO TRY

The Trust's workshops are always popular and enable islanders, as well as the occasional visitor, to learn a new skill and have fun trying. Workshops take place in our historic buildings such as the pressoir at The Elms and there is always a discount for members of the Trust – so another reason to encourage others to join.

Workshops for Food Lovers

Saturday 28 March **LEARN HOW TO MAKE** **'JERSEY WONDERS'** **- LES MÈRVELLES DÉ JÈRRI**

Come along to Le Moulin de Quétivel and learn the art of making 'Jersey Wonders' with Jenny Le Maistre. Jersey housewives traditionally cooked their wonders as the tide went out. If they cooked them on an incoming tide, the fat in which the wonders were cooked would invariably overflow the pan! Why not walk or cycle on the new valley path to reach the mill?

Meeting point: Le Moulin de Quétivel

Time: 2 – 4pm

Price: £10 for Members; £20 Non-Members to include refreshments (max 18 pax)



Workshops for Gardeners

Saturday 23 May **WATTLE HURDLE** **GARDEN EDGING/FENCE** **MAKING**

Join James Dyson, Rural Crafts Artist and Environmentalist and 'Little Green Man' Alcindo Pinto in the orchard at The Elms and learn how to make wattle hurdles (fencing panels and garden edging panels) out of natural materials such as Hazel or willow. Wattle fencing is made from woven coppiced willow meaning it is cut from new growth, giving it superb flexibility and providing uniform thickness across each fence panel. Enjoy a cup of tea and homemade cake in the pressoir. Participants will take home a garden edging panel (4ft x 2ft) and the skill and know how to make large fencing panels!

Meeting point: The Elms

Time: 10am – 1pm

Price: £20 for members; £30 for Non-members to include refreshments

Workshops for Creatives

Wednesday 3 June **SPRING FLORISTRY** **WORKSHOP**

Join local florist Claire Evans from Eden by Claire – and learn how to make a beautiful flower display using locally grown peonies, and other spring flowers. This workshop aims to be as environmentally friendly as possible and will not include oasis foam! Please bring along a favourite container to create a stunning display.

Meeting point: The Elms

Time: 6pm – 8pm

Price: £35 Trust Members; £45 Non-Members to include wine and refreshments



Thursday 20 August **PEBBLE PAINTING AT** **THE WHITE HOUSE**

Come along to Le Don Hilton – the 'White House' in St Ouen's Bay and enjoy an evening of painting 'pebbles' and scallop shells with local artist Josephine Logue from Jo's Painted Pebbles. Watch Jo create her wonderful creations before having a go yourself as the sun sets over a high tide in the bay.

Meeting point: Le Don Hilton

Time: 6.30 – 8.30 pm

Price: £10 for Members, £20 Non-Members to include a glass of wine.

All of the activities on this page are discounted for National Trust for Jersey Members. If you are not already a member of the Trust, please consider supporting us. Membership of the National Trust for Jersey starts at £30 per annum and you can join online: www.nationaltrust.je/membership.

Lé Jèrriais:

AU R'NOUVÉ TOUT EST BÉ

(In Spring everything's lovely)

BY GERAINT JENNINGS

Nou dit qu'au R'nouvé tout est bé, véthe bé comme eune flieur. Ch'est pour dé vrai ieune des bieautés d'la campagne dé vaie les flieurs à r'fliethi ès banques et fôssés, ès prés et bouais'sies. Mais combein d'ches flieurs qué nou peut nommer?

Pour c'menchi y'a les g'zettes. Tchi belles quézettes qué nou vait avau les c'mîns! Tchiquefais i' pathait qu'tout Jèrri lit jaune comme eune g'zette. Mais y'a étout les pus p'tites pales qu'des gens appellent des pipots, et la g'zette dé Mar a des flieurs doubl'yes mais chenna a un doubl'ye nom étout viyant qu'il' ont nom pipots d'Avri. Chenna dépend ofûche du mais.

Eune aut' jaune flieur est du jaune coucou, mais l'pain d'coucou n'est pon la même chose est n'est dgéthe jaune mais r'sembl'ye hardi ès anémônes du bouais.

Les bouonnefemmes lus déhalent au R'nouvé et nou l's appellent étout les p'tites nues. J'n'avons pon d'ourses en Jèrri mais y'a tout comme d'l'âl des ours.

S'nou n'voudrait pon tchaie becque à barbe d'auve eune ourse, nou n'voudrait nément aver des morrhouites. Mais l'morrhouiton (qu'nou soulait faithe servi pour dgéthe les morrhouites) est pus bé qu'san nom.

Ieune des pliantes tch'a un tas d'noms ch'est les pip'soles, ou les pip'solles, les piptholes, les pip'roles, les preunoles, les prunoles, les prunm'noles, les prinm'noles, les pieunm'tholes, les prinmeroles, les prinm'tholes, les prinm'soles, les pâqu'roles, les pâqu'tholes ou bein du coucou... Ché s'sait l'Été d'avant qu'nou veinge à fin d'toutes les vâriations l'travèrs d'l'île!

In Spring everything is as beautiful as a flower, and the blooming hedgebanks, meadows and woods are a real beauty of the countryside. How many of these flowers can you name in Jèrriais?

To start with there are daffodils making the Island seem as yellow as a daffodil. Some people differentiate between daffodils, double daffs and narcissi. Cowslips and wood sorrel have a similar name, but wood anemones and wood sorrel resemble each other more in appearance. Snowdrops can look like clouds, but ramsons aren't very bear-like. Haemorrhoids are as unwelcome as bears, but pilewort (which used to be used as a treatment) is attractive especially under its other name of lesser celandine. Primroses have so many differing names across the Island that it'd be Summer before you'd got to the end of them - and you might go cuckoo trying!



LE MOULIN DE QUÉTIVEL

A GEM OF INDUSTRIAL HERITAGE IN BEAUTIFUL ST PETER'S VALLEY

WHETHER you are visiting the mill for the first time, stopping off for coffee or shopping for a special gift, there is plenty to see and do at the Island's only remaining working watermill in St Peter's Valley. This year's season will open with an immersive exhibition by artists Karen Le Roy Harris and Miriam Sedacca (see opposite), followed by Open Milling on Saturday 2 May – a unique occasion when visitors are able to witness the whole milling process from start to finish and purchase a bag of freshly milled flour. New for this year, the Trust will be opening the mill on Saturdays throughout August – offering families an opportunity to step back in time and experience life in Victorian Jersey, when John Hawkins lived at the mill with his wife Rebecca and twelve children. With volunteers on hand to demonstrate the workings of the mill and activities provided for children, the mill is a great location for all the family – and a perfect pit stop for walkers and cyclists, who can enjoy hot drinks and homemade cakes in the small tearoom overlooking the meadow.



LE MOULIN DE QUÉTIVEL OPENING TIMES

4 May – 29 September
Mon & Tues (10am – 4pm)

Admission £3 Adults; £1 Children; NT Members Free

To find out about special events at Le Moulin de
Quétivel, see page 47-50.

Open Milling Saturday 2 May.

'UNTIL YOU BECAME ME'

ART INSTALLATION AT LE MOULIN DE QUÉTIVEL

“Human bodies comprise around two-thirds water; as such we have an inseparable and co-substantive relationship with all other bodies of water, whether they be oceans, reservoirs, or any of the millions of species which inhabit the Earth and also hold water within themselves.”

KAREN LE ROY HARRIS AND MIRIAM SEDACCA



Your skin is only surface tension by Miriam Sedacca

This April, Jersey's only remaining working watermill will be brought to life with a new exhibition exploring how water connects us to each other and the wider environment.

Emerging artists Karen Le Roy Harris and Miriam Sedacca, supported by ArtHouse Jersey and in collaboration with the Trust, will transform Le Moulin de Quétivel into an immersive space using sculpture, installation, film and performance to expose the vital, yet fragile, relationship we all have with water.

Having previously toured to Stroud and London, it was a natural progression for Karen, who is from Jersey, to bring 'Until You Became Me' to Le Moulin de Quétivel, where water power has been harnessed for milling wheat for generations. The exhibition is aimed at people of all ages and includes a soundscape by Heather Ryall marrying the sounds from the natural environment with sounds from domestic life; a new film, partially filmed underwater in Jersey, addressing the relationship Islanders have with the ocean and fresh water; and an installation of ceramic anthropomorphic forms presented alongside found objects from rivers.

'Until you Became Me' will run from 18 April - 29 April (Saturday - Wednesday, 10am - 4pm). Suggested donation £3 for Adults and £1 for Children; NT Members and Under 6s Free.

The Cooks of 16 NEW STREET



THERE may be some truth in the old adage that too many cooks spoil the broth,' however with so many special events happening at 16 New Street throughout the year there is definitely an advantage in having three living history cooks, each with their own knowledge, experience and inimitable style.

Living History is an educational medium used by museums to convey a sense of the everyday life of a certain period. In the case of 16 New Street, the living history presentation in the Georgian kitchen serves as an 'amuse bouche' for visitors who not only have an opportunity to observe the workings of a traditional kitchen but also gain an insight into the life of the household circa 1815.

The owner, Philippe Journeaux's income as a notary public would have meant that the family could afford more expensive foodstuffs and, thanks to Jersey's shipping history and the rising

cod trade, it is easy to believe that a wide variety of luxury goods would have been available, imported into the Island from ports on the triangular cod trade route and other places: spices, sugar and rum from the West Indies; wines, almonds, dried and citrus fruits from Portugal. Local agriculture would have provided good quality food and it is probable that due to the house's location on the edge of town fresh dairy produce, meat and poultry would have been readily available.

The kitchen would have been very busy at that time - the mistress possibly preferring to leave the management of the household to her trusted servant to afford her more time for entertaining. We know that Philippe and Anne Journeaux held a grand ball at one of their New Street properties in the early 19th century - with guests coming from as far afield as Guernsey - and no doubt the cook would have been expected to provide interesting dishes for them to sample.

Undoubtedly one of the highlights of a visit to 16 New Street today is the cook's presentation in the Georgian Kitchen and the opportunity to sample some typical dishes of the period. On the opposite page the three 'Louisas' have shared their favourite crowd-pleaser recipes from 1815 for you to try out at home.

16 NEW STREET OPENING TIMES

1 April - 30 October

Weds, Thurs, Fri (10am - 4pm)

Admission £6 Adults; £3 Children;
NT Members Free

To find out about special events at 16 New Street - including our forthcoming Easter Installation - see pages 00-0.

Recipes



Dian Mezec's

ROUT DROP CAKES

These small rich cakes were served at a rout, an evening assembly or large party. Mentioned in Jane Austen's 'Emma' and Thackeray's 'Vanity Fair,' the earliest known printed recipe is found in a book by contemporary Mrs Rundell.

Makes 18

150g plain flour
Pinch of salt
50g softened butter
50g caster sugar
1 small free-range egg
½ teaspoon orange juice
½ teaspoon rosewater
1 teaspoon wine or sherry
1 teaspoon brandy
25g currants

Method

Preheat the oven to 180C. Sift the flour with a pinch of salt into a bowl. Rub in the butter using your fingertips until the mixture resembles breadcrumbs, and then stir in the sugar. Combine the egg, orange juice, rosewater, wine or sherry and brandy in a separate bowl and add to the mixture a little at a time to form a smooth dough. Stir in the currants and spoon in neat heaps onto a baking tray. Bake for 16-18 minutes until golden brown.



Sue Gorin's

QUEEN CAKES

These sweet and buttery little cakes are sometimes called heart cakes. Traditionally baked in a teacup, they are considered to be an early version of the modern day cup-cake. This recipe is adapted from Mrs Rundell's 1808 book, 'A New System of Domestic Cookery'.

Makes 8

125g softened butter, plus extra for greasing
125g caster sugar
2 large free-range eggs
Finely grated zest of 1 unwaxed lemon (or 1 teaspoon rosewater or orange water)
125g currants
150g plain flour
1 teaspoon baking powder
Splash of milk
Icing sugar, to dust

Method

Preheat the oven to 180C and grease 8 heart-shaped tins. Beat the butter and sugar in a bowl until pale and creamy. Beat in the eggs, a little at a time, beating well after each addition. Beat in the lemon zest (or rose/orange water) and stir in the currants.

Sift together the flour and baking powder in a separate bowl. Using a large metal spoon, fold the dry ingredients into the cake mixture, adding a splash of milk to form a soft dropping consistency. Spoon into the prepared tins and bake in the oven for 20 minutes until well risen and the tops spring back when lightly touched. Set aside to cool in the tins for 5-10 minutes before removing to a wire rack to cool completely. Dust with icing sugar and serve with a cup of tea.



Lindsey Noble's

RATAFIA CAKES

Lindsey initially began serving these light, crunchy cakes as a wheat-free tasting option for visitors - but since their introduction they have become a firm favorite with everyone who tries them, visitors and volunteers alike. Similar to Italian amaretti, and perhaps a precursor to macarons, one visitor described them as tasting like Farley's Rusks (judge this for yourselves!). In the Regency era Ratafias were often included on the supper tray, served after the evening's entertainment alongside a glass of sweet wine or negus - dunking optional. One can just imagine Elizabeth Bennett and her sisters indulging in a few of these - and some gossip - after the ball at Netherfield in Pride and Prejudice. Delicious with coffee or, Regency-style, dipped in your supertime glass of sweet wine or Madeira.

Makes 24

110g ground almonds
175g caster sugar
2 free-range egg whites
1 teaspoon orange flower water or orange liqueur
Rice paper or baking parchment

Method

Preheat the oven to 180C and line two baking sheets with rice paper or baking parchment. Sift the almonds into a large bowl and stir in the sugar, making sure there are no lumps. Crack the egg whites into a separate bowl and whisk until stiff peaks are formed, then whisk in the orange flower water or liqueur. Carefully fold the almond and sugar mixture into the egg whites until combined. Spoon or pipe onto the prepared baking sheets, spacing well, and bake in the oven for 10-12 minutes until golden but still slightly soft underneath. Cool on the sheet and store in an airtight tin.



Jersey Electricity

INSPIRING A ZERO-CARBON FUTURE...

“Jersey Electricity has proudly been a long-standing supporter and corporate partner of the National Trust for Jersey.”

CHRIS AMBLER
CEO JERSEY ELECTRICITY



Jersey Electricity is supporting The National Trust for Jersey's Education Programme for the next three years, providing funding for the Trust's two Education Officers to the end of 2022.

Around 3,500 children a year engage with the Trust's programme, which involves a wide range of activities that complement schools' science curricula and encourage children to 'reconnect with nature'. The focus of the new programme will be on biodiversity loss, recognising the causes and impacts of its loss and how to prevent this.

Under the banner 'We Have The Power', the programme aims to raise awareness of the causes of climate change and the small - and large - scale carbon reduction steps needed to curb it. As well as conducting a series of school assemblies, the Trust and JE hope to make Le Moulin de Quétivel a learning centre for climate change education events.

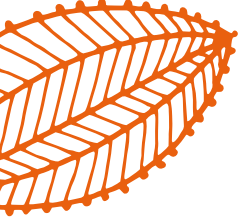
Trust CEO Charles Alluto said: *'Our Education Programme has been running for ten years and is an important part of the Trust's varied work. Engaging young people in nature is vital for the future protection of our natural environment which is under threat more than ever. Our previous sponsorship of this programme had concluded and we are delighted that Jersey Electricity has come on board. The utility and its employees have supported the Trust on many initiatives, including, of course, this year, our woodland restoration of Mourier Valley and our #LoveNature Festival.'*

JE CEO Chris Ambler said: *'Jersey Electricity has proudly been a long-standing supporter and corporate partner of the National Trust for Jersey. As well as our Corporate Membership, over the past decade we have supported the Trust on many initiatives in which we share a mutual passion and interest, working hard to protect the Island's natural resources and environment. Today, that also means taking action on climate change.'*

We are therefore delighted to be able to support the Trust's important Education Programme for the next three years. As always, we see great synergy between this programme and Jersey Electricity's environmental aims and ambitions.

As a company, our vision is to help inspire a zero-carbon future for Jersey and for that we need our children to be informed, engaged and passionate about protecting our wonderful Island and playing their part in the global fight against climate change and its impact on biodiversity.

I know I speak for colleagues at Jersey Electricity and customers when I say and I hope this latest sponsorship alliance will deepen our relationship with the Trust further and bring lasting benefits to our Island.'



WE HAVE THE POWER TO MAKE JERSEY GREENER

Over the past 10 years, the Trust has become a leading figure in Jersey's environmental education; working with the Island's primary and secondary schools to support their curriculum and offering a variety of engaging activities to local families and community groups.

It is hoped that these relationships will now be strengthened by issuing a 'call to action' in light of the worldwide climate crisis. Building upon the focus of enjoyment and understanding, activities will now help empower children to make a positive difference to their environment, both at home, school and in the countryside.

Key objectives of the new programme:

WE HAVE THE POWER TO COMBAT CLIMATE CHANGE

Developing an awareness of the causes and impacts of climate change and the steps that can be taken, both on small and large scales, to reduce these and to offset carbon emissions. Creating a feeling of empowerment.

WE CAN RECONNECT WITH THE NATURAL WORLD

Recognising the causes and effects of biodiversity loss and the steps that can be taken to reduce this damage. Protecting existing habitats and creating new ones. Making a positive impact. 'Unplugging' from the digital world and reconnecting with nature. Sparking a desire within children to protect the areas that they have connected with.

Key events for 2020:

WE HAVE THE POWER

Presentation for schools on climate change and renewable energy.



SPRING INTO ACTION

Junior conservation tasks for schools and families to take positive steps towards helping the environment.

#LOVENATURE FESTIVAL

A week-long environmental festival celebrating the Trust's land and properties in and around St. Ouen's Bay in Jersey's National Park.



TREE HUGGERS

Fun, interactive activities in beautiful Trust woodland highlighting the importance of trees and plants in off-setting carbon emissions.



FLOWER POWER

A variety of events for schools and families with a focus on the importance of pollinating insects. To include bug hunts, wildflower seed-bomb making and pollinator picnics!



WHAT A LOAD OF RUBBISH!

Waste-free Wednesdays at the White House' Summer holidays craft workshops on upcycling and reducing waste in the beautiful setting of La Don Hilton (the White House) in St Ouen.

WE HAVE THE POWER – MILL MONDAYS

With a focus on renewable energy, children will learn about different forms of energy and gain first-hand experience of water and solar power at Le Moulin de Quétivel during the summer holidays.

HOP TO IT!

Garden ponds are an invaluable wildlife resource; they support a greater number of animal species than any other type of habitat.

If you think you don't have space for a garden pond then think again! You may be surprised to know that you can create a mini pond from old materials that could even fit on a balcony!

What you need to do:

- 1 Choose a container that will fit in your chosen outdoor space. Repurposed items work well, such as an old washing-up bowl, dustbin lid, shallow bucket, sink (with the plug silicon-sealed in place) or a large plant pot lined with a pond liner.
- 2 Begin your task with the container in the place where you want it to be permanently located. If you are able to dig a hole, your container can sit flush with the ground.
- 3 Fill the bottom of the container with sand and stones (from the garden centre or your own garden, not the beach.)
- 4 Ask at the garden centre for local aquatic plants (such as Water Mint or Flag Iris) which will help to oxygenate the water. Use a layer of aquatic compost (not regular garden compost) followed by the plants (keep them in the mesh baskets they were supplied in) then top with fine gravel. Two or three plants is sufficient for a small container pond.
- 5 Fill the container with rainwater (or tap water that has been left outside for a few days for chemicals to evaporate.)
- 6 Ensure that wildlife have safe access by ensuring there is a way in and out of the pond. Make stepping stones from stones or logs both inside and outside the pond.
- 7 Now sit back and watch for wildlife enjoying their new home. Look out for toads and newts, dragonflies and damselflies as well as birds and hedgehogs visiting for a drink.



THE INTERNATIONAL NATIONAL TRUSTS ORGANISATION

CATHERINE LEONARD
INTO SECRETARY GENERAL

THE International National Trusts Organisation (INTO) was founded in 2007 as the umbrella body for the global National Trust movement. Our role is to bring people and organisations together to share ideas, experience and resources. To grow the capacity of existing trusts and set up new ones in countries where they do not currently exist. And to be a global voice for matters of common concern.



Avebury Manor, Wiltshire UK

Today, INTO has 80 members including of course the National Trust for Jersey. Although different in size, age and emphasis, these organisations all care about special places, protecting them for everyone and for ever. Together as INTO, they unite people in their concern for heritage, wherever it is in the world.

INTO's key objective for 2018-2020 is to 'increase the impact of the National Trust movement by providing an effective global focal point and supportive framework for the worldwide growth of National Trusts and similar heritage organisations'.

So, there's a big focus on growth and one of the ways we are delivering growth this year is our INTO Incubator.

Across the world, dedicated and passionate people are setting up new heritage organisations. Big on ambition and hope, they are often struggling with limited resources, insufficient political support and a lack of public awareness. Our role is to help them achieve their objectives. So, this one-week residential programme in March will enable them to learn from the National Trust model and experience.



Visiting Avebury Manor with Alonso Henry



ICNT Panel



We're due to have 15-20 senior representatives from countries as diverse as Haiti to Singapore via Albania and Egypt! They'll be finding out all they need to know to grow or 'incubate' their new organisations. And they'll be learning from the very best. This year the National Trust (of England, Wales and Northern Ireland) celebrates its 125 anniversary and is by far the oldest and largest of our INTO members. As such, it has a wealth of knowledge and experience to impart.

But we are also bringing people from other European organisations to share their more recent, often very personal, experiences in establishing a new trust. Here at INTO we know that however experienced or well-established, there's always something to learn or stimulate ideas. Equally, the value of drawing on our combined experience, talents and resources is immeasurable.

Other programmes we run include TAP-INTO, a travel grant scheme which supports the exchange of knowledge and expertise between INTO members. Amongst recent partnerships are the National Trusts for Scotland and Trinidad and Tobago who are exploring the management of small islands sites. Or a senior manager from Cornwall who advised the National Trust of Canada on a potential new acquisition.

We also run an international working holidays programme and of course our biennial INTO conferences.

The next one will take place in Antwerp in April 2021. And we about to launch our new reciprocal visiting arrangements, which will include more INTO members than ever!

Not all our programmes involve travel however and we are often called upon for virtual advice and connections, now captured in our ASK-INTO programme. If anyone has a question they need solving, they can call upon the combined wisdom of the INTO network.

We might call ourselves 'National' Trusts but in fact, conservation can't be neatly parcelled up into national packages. Keeping alive our wonderful built, cultural and natural heritage for present and future generations depends on global co-operation.

We live in a complex, multi-dimensional and inter-dependent world. Things have changed a lot, even since INTO was established. Funding has reduced while development pressures have increased; the impacts of climate change become more real every year; and there are new challenges posed by migration and other societal trends.

So it's wonderful to see people and organisations coming together under the INTO banner to support one another and to show solidarity. With international support, local empowerment and joined up working, I believe we can really make a difference.

Events

We would like to encourage our members to book events online. This helps us not only to monitor ticket sales more effectively, but also helps to manage our limited resource within our small office team.

Of course if you would prefer not to book online you can telephone 483193 or call into the office between the hours of 9am to 5pm Monday to Friday.

Log onto:
www.nationaltrust.je/events

MARCH

Saturday 21 March **MOTHER'S DAY** **AFTERNOON TEA AT** **16 NEW STREET**

Treat your mum to a vintage afternoon tea in the magnificent setting of 16 New Street. Price includes afternoon tea, including Prosecco, and a tour of the Georgian House.

Meeting Point: 16 New Street

Time: 3pm – 4.30pm

Price: £17.50 Members; £25 Non-Members. (This event is not suitable for under 12s and we regret that we are unable to cater for special dietary requirements. Please note that this event is being held on the first floor of 16 New Street and there is no lift access.)

Thursday 26 March **CLASSIC HERD** **FARM TOUR AND** **AFTERNOON TEA**

The second in our series of farm and producer tours, members are invited to join Julia and Darren Quènauld from Classic Herd in the courtyard at Manor Farm to have a tour of the farm and to view the automated milking process. Members can enjoy meeting some of the farm animals and take afternoon tea in the Classic Farm tea Room. £12 to include scone with butter homemade jam and cream, a pot of breakfast tea or an Americano coffee and a slice of cake!

Meeting Point: Classic Herd Farm, St Peter

Time: 3pm – 4.30pm

Price: £12 for Afternoon tea and farm tour

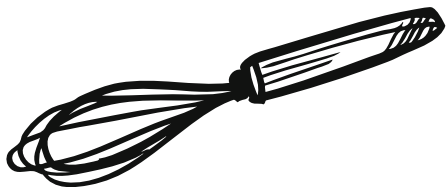
Saturday 28 March **LEARN HOW TO MAKE** **'JERSEY WONDERS' LES** **MÈRVELLES DÉ JÈRRI**

(See page 34 for more details.)

Meeting Point: Le Moulin de Quétivel

Time: 2pm – 4pm

Price: £10 for Members, £20 Non-Members to include refreshments (max 18 pax)



APRIL



1 - 25 April (Wednesdays, **Thursdays, Fridays, Saturdays)** **EASTER TRADITIONS** **AT 16 NEW STREET** **GEORGIAN HOUSE**

Step back in time and find out how families used to celebrate Easter during the 19th century. Visit the Georgian kitchen, where the cook is busy preparing pancakes and Easter biscuits, admire the Simnel cake and Easter flummery in the dining room and find out about Easter traditions such as egg rolling and egg tapping. Activities for younger visitors will be provided on Saturday 4 and 11 April, to include an egg hunt and Easter craft activities.

Meeting Point: 16 New Street

Time: 10am – 4pm

Price: £6 Adults; £3 Children; Under 6s and Trust Members Free

Wednesday 15 April **SPRING INTO ACTION –** **PURPLE DEW PLANT** **REMOVAL**

Purple dew plant is a non-native invasive plant that spreads quickly and suffocates many other small, delicate native plants. Although it looks pretty, it grows like a blanket across large areas, stopping native plants from growing and preventing some animals, such as solitary bees, from accessing their nesting sites. Come along to help our rangers remove the plants and find out more about the work they do to protect this important habitat.

Meeting Point: Car park opposite the Wetland Centre, St Ouen

Time: 2.30pm – 3.30pm

Price: Free of charge. Booking essential. Suitable for children aged 4-11.

Tuesday 7 April **SPRING INTO ACTION –** **NURDLES HUNT**

Nurdles are small plastic pellets which have ended up at sea. So small they largely go unnoticed, they release harmful chemicals into the water and are mistaken as food by many marine animals meaning that they enter the food chain. Join Plastic Free Jersey to find and correctly dispose of these nurdles, along with other waste discovered along the way.

Meeting Point: Le Don Hilton (The White House), St Peter

Time: 10am – 11am

Price: Free of charge, just turn up! Suitable for children aged 4-11

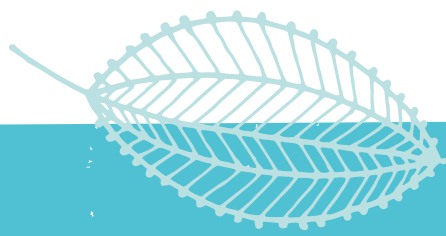
Saturday 11 April **SPRING INTO ACTION –** **SHARK EGG MONITORING**

An Easter Egg hunt with a difference! Join members of the Marine Biology Section of the Société Jersiaise to search the high-tide line for shark and ray egg cases which will be identified, counted and added to the marine conservation survey.

Meeting Point: Car park below Faulkner Fisheries, L'Etacq

Time: 10.30am – 11.30am

Price: Free of charge, Booking essential. Suitable for children aged 4-11



APRIL



**Saturday 11 April
(Easter Saturday)
LE COUPE LOST
DOLMEN WALK**

Join your guide Bob Tompkins on a circular walk from St Catherine's Breakwater via small country lanes to Fliquet and across farm tracks to La Coupe to visit the 'lost' dolmen. This is an excellent opportunity to view the archaeology of this inter-tidal landscape on a very low tide.

Meeting Point: Meet in the car park at the Breakwater
Time: 2.30pm - 5pm
Price: Free for Members, £10 Non-Members

**18 April - 29 April (Saturdays,
Sundays, Mondays & Tuesdays)
UNTIL YOU BECAME ME
- ART INSTALLATION AT
LE MOULIN DE QUÉTIVEL**

(See page 37 for more details.)

Meeting Point: Le Moulin de Quétivel
Time: 10am - 4pm
Suggested donation: £3 Adults; £1 Children; Under 6s and Trust Members Free

**Tuesday 21 April
THE HISTORY OF TEA -
A TALK AND VINTAGE
AFTERNOON TEA AT 16
NEW STREET**

Britain's love affair with tea dates back to the 17th century and has shaped and changed our society. Join historian Peter Le Rossignol for a journey across continents, and back in time, to find out where our favourite brew comes from and indulge in a vintage tea afterwards around the magnificent table in the Club Room.

Meeting Point: 16 New Street
Time: 4pm - 5.30pm
Price: £17.50 Members; £25 Non-Members to include a 30 minute talk and afternoon tea, including Prosecco.



MAY

**Saturday 2 May
OPEN MILLING AT LE
MOULIN DE QUÉTIVEL**

Visit the only remaining working watermill on the Island and experience the whole milling process from start to finish. Join the Trust's rangers as they open the sluice gates, admire the ancient waterwheel as it springs into action and meet our very own miller, who will be milling the Trust's unique stoneground flour.

Meeting Point: Le Moulin de Quétivel
Time: 10am - 4pm
Price: £3 Adults; £1 Children: Under 6s and Trust Members Free

**Thursday 21 May
GARDENS THROUGH
THE AGES**

A talk on gardens through the ages with historian Peter Le Rossignol - beginning with the monastic and castle gardens of the medieval period, exploring the naturalistic landscape gardens of the 18th century, which saw the emergence of Lancelot 'Capability' Brown, and finishing in the Victorian era when plant hunters around the world brought colourful and exotic plants to the masses.

Meeting Point: 16 New Street
Time: 6.30pm - 7.45pm
Price: £10 Members; £15 Non-Members to include a talk and a glass of Pimms in the Regency garden at 16 New Street.



**Saturday 23 May
WATTLE HURDLE
GARDEN EDGING/
FENCE MAKING**

(See page 34 for more details.)

Meeting Point: The Elms
Time: 10am - 1pm
Price: £20 Members; £30 Non-members to include refreshments





JUNE

JULY

Monday 25 - Sunday 31 May #LOVENATURE FESTIVAL

The National Trust for Jersey is staging its annual environment festival #LoveNature over the May half term. Set in and around St Ouen's Bay in Jersey's National Park and at other Sites of Special Interest owned by the Trust, the event coincides with and showcases the open afternoon at Le Noir Pré to see the wild orchids in all their glory. Participants are invited to enjoy a week of all things 'green' such as scenic walks, bird tours, dawn chorus and sunset activities, bug safaris, pollinator picnics and a host of other wildlife activities.

Meeting Point: Various.

Full programme to be produced in due course.



Saturday 30 May JERSEY'S CLIMATE EMERGENCY: HOW DID WE GET HERE? TALK BY JONATHAN RENOUF

Over the last 20 years, Jonathan has had a ring side seat on the climate change debate. As a TV producer in the BBC Science Unit, he was involved in almost every major BBC documentary about climate change, including 2019's 'Climate Change: The Facts'. He has met leading climate change sceptics, visited scientists studying climate change all over the world, and filmed climate change in action. In this talk, illustrated with clips from many different television programmes, he explains why climate change is such a difficult subject to film, identifies the key turning points in our understanding of the changing climate, and discusses how best to tackle climate change scepticism.

Meeting Point: Jersey Arts Centre

Time: 8pm

Price: £5

Booking: Please call the Jersey Arts Centre box office on 01534 700444 or go to <https://artscentre.je/>

Wednesday 3 June SPRING FLORISTRY WORKSHOP

(See page 34 for more details.)



Wednesday 10 June DEVIL'S HOLE WALK

Join Blue Badge Guide Sue Hardy on a wonderful circular walk from Devil's Hole. This walk is fairly level and will go through National Trust land with fantastic views of the other Channel Islands. The walk will include the cliff path between Crabbe passing Col de La Rocque and Ile Agois. Learn about tales of smuggling, ship wrecks and learn the answer to the riddle of how Devil's Hole got its name.

Meeting Point: Priory Inn Car Park

Time: 2pm - 4pm

Price: Free for Trust Members; £10 Non-Members

Bus Route: 7



Friday 19 and Saturday 20 June SUNSET CONCERTS

Enjoy live music in the beautiful natural setting of Mont Grantez headland overlooking St. Ouen's Bay. Bring a picnic and enjoy fantastic live music as the sunsets and celebrate the summer solstice - the longest day of the year. This is the ultimate way to experience the delights of Jersey at this very special time of year.

Meeting Point: Mont Grantez, St Ouen

Time: 5.30pm - 9.30pm



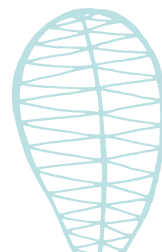
SUMMER HOLIDAYS

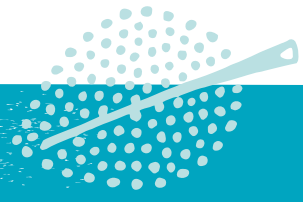
With a brand-new programme of events for 2020 there will be plenty to keep children occupied during the summer holidays! Look out for updates via email to members and on our Facebook page for more details in the coming months.

Wednesday 1 to Friday 31 July 30 BAYS IN 30 DAYS

Jump in this July and swim in a variety of bays throughout the month. A fun way of making the most of our beautiful island and the feeling of having achieved something in the summer rather than it just flying by. Sea swimming has proven benefits for health and wellbeing and participants can visit new places or those bays they haven't visited for years. Sea swimming makes you feel alive and loving life! Join the group swim at the start of the month then decide where and when to swim, joining the final group swim at the end of the month

Meeting Point: There will be three group swims, a launch event and celebratory swim in St Brelade's Bay at the beginning and end of the event and a mid-month swim at La Rocque. All details to be advertised nearer the time.





JULY

AUGUST

Wednesday 8th July ST LAWRENCE VALLEY WALK

Join Blue Badge guide and long term St Lawrence resident, Sue Hardy on a beautiful walk through the verdant St Lawrence countryside to Waterworks Valley. Travelling anti clockwise, you will meander along footpaths, across streams and bridges through the valley and experience the 'toad trail' at Hamptone before meandering back to the Parish Hall.

Meeting Point: St Lawrence Parish Hall
Time: 2pm - 4.30pm
Price: Free for Trust Members; £10 Non-Members
Bus Route: 7



Thursday 23 July THE GRAND TOUR - A TALK AT 16 NEW STREET

Samuel Johnson said: 'A man who has not been in Italy is always conscious of an inferiority, from his not having seen what it is expected a man should see.' The first British tourists were young, mostly male, 17th and 18th century aristocrats who embarked on long trips around the continent 'to sow their wild oats' once they had come of age (around 21 years). However, the legacy of the Grand Tour lives on to the modern day and still influences the holiday destinations many of us choose. Join us for a whistle bang grand tour around the world, crossing the Alps (by sedan chair), descending into Italy (the cradle of Western civilisation)... and finishing abruptly with the outbreak of the Napoleonic Wars.

Meeting Point: 16 New Street
Time: 6.30pm - 7.45pm
Price: £10 Members; £15 Non-Members to include a drink on arrival.



1 - 29 August (Saturdays) A MILLER'S LIFE

Step back in time and experience life in Victorian Jersey when John Hawkins lived at Le Moulin de Quétivel with his wife Rebecca and their twelve children. Visit the historic kitchen and learn how to shape a Jersey wonder, enjoy a guided tour of the mill with one of the Trust's volunteers and enjoy homemade cakes and refreshments in the small tearoom overlooking the meadow. Activities for children include dressing up, a spotter trail and mill-themed craft activities.

Meeting Point: Le Moulin de Quétivel
Time: 10am - 4pm
Price: £3 Adults; £1 Children; Under 6s and Trust Members Free

Wednesday 5 August FLOWER PRESSING WORKSHOP AT LE MOULIN DE QUÉTIVEL

Join us for a children's workshop at the mill to learn how to select and press your own flowers. Each child will be given their own flower press and shown how to make a gift card and a bookmark, using ready-pressed flowers, which they can take home afterwards. Children must be accompanied by an adult.

Meeting Point: Le Moulin de Quétivel
Time: 11am - 12.15pm
Price: £5 Trust Members; £10 Non-Members

Wednesday 5 August GOREY AND THE EAST

Join your guide Sue Hardy on a walk around Gorey and the surrounding area. Learn about the oyster trade and the history of Mont Orgueil Castle. The route will visit Les Maltières (Grouville marsh) the island's second most important wetland area after St Ouen's pond.

Meeting Point: Bus stop along Gorey Pier
Time: 2pm - 4.30pm
Price: Free for Members, £10 Non-Members
Bus Route: 1



Thursday 20 August PEBBLE PAINTING AT THE WHITE HOUSE

(See page 34 for more details.)

Meeting Point: Le Don Hilton (the White House) St Peter
Time: 6.30pm - 8.30pm
Price: £10 for Members, £20 Non-Members to include a glass of wine.



National
Trust Jersey

Become a Member Today

If you are reading this magazine and are a member of The National Trust for Jersey, then thank you so much for supporting us and the work we do to safeguard our island. As a truly independent charity which receives no government funding, subscriptions are a very important income stream for the Trust and we would really like to encourage every one of our members to invite a family member, friend or colleague to join the Trust. This will enable us to grow our membership, increase our income and spread the word about how together we can Discover, Enjoy and Protect what makes our Island special.

If on the other hand you are reading this magazine and are not a member of the Trust but appreciate what we are trying to achieve, then please consider joining without delay! For less than a penny a day or 58p a week you can be a member of the Island's foremost conservation

organisation. Simply apply online by going to our website www.nationaltrust.je or pick up a leaflet at 16 New Street, St Helier, Le Moulin de Quétivel in St Peter's Valley, or at the Wetland Centre in St Ouen's Bay. Alternatively pop into our office at The Elms in St Mary or feel free to give us a call on **483193**.

We also offer Gift Memberships which make ideal birthday and Christmas presents. Packaged in a lovely gift box, the membership cards together with our handbook can be posted out direct to the recipient or collected from the office.

Whilst we offer a considerable number of tangible benefits through our membership; namely free entry to our sites, a varied events programme with membership discounts, reduced rates for our property hire and two membership magazines a year, the overriding benefit is intangible; helping the Trust to care for its historic buildings, land, footpaths and coastline

for the enjoyment of everyone. When you next take a walk on the north coast and look at the uninterrupted view over Plémont, or you walk through Fern Valley and enjoy the seclusion of the woods and take a visit to the Wetland Centre and see the marsh harriers overhead or spot a rare over wintering bittern in the reed bed then do not forget this has all been made possible by the generosity of our supporters over the years, through memberships, donations and legacies.

You will also read in the following pages how your National Trust for Jersey membership card entitles you to visit over 300 National Trust properties in the UK and across the world. As the editor of the Evening Post declared in 1937 'All lovers of Jersey who can afford the subscription ought to be members of the Trust'. So if you love your Island home then please become a member and help us to keep your Island special forever and for everyone.

DISCOVER | ENJOY | PROTECT



**National
Trust Jersey**

Patron: HRH The Prince of Wales

Discover

THE MAGAZINE OF THE NATIONAL TRUST FOR JERSEY

CONTACT DISCOVER

Get in touch. We would love to hear your questions, comments and ideas.

The National Trust for Jersey
The Elms
La Chèvre Rue
St Mary
Jersey JE3 3EN
Telephone **01534 483193**
enquiries@nationaltrust.je

MAKING IT HAPPEN DESIGN & PRODUCTION TEAM

The Idea Works Limited
Regency House
Regent Road
St Helier
Jersey JE2 4UZ
Telephone **01534 755400**
info@theideaworks.com

EDITORIAL TEAM

The National Trust for Jersey: Charles Alluto, Donna Le Marrec, Catherine Ward, Jon Parkes, Robin Kelly, Jo Stansfield, Conrad Evans and Sarah Hill.

Contributors: Catherine Leonard, Richard Le Sueur, Sue Hardy, Francis Binney, Aaron Le Couteur, Bob Tompkins, Geraint Jennings, Paula Thelwell, Karen Le Roy Harris, Miriam Sedacca, Karin Taylor, Mike Stentiford MBE and Jersey Electricity.

PHOTOGRAPHS

Credits to: Société Jersiaise Photographic Archive, Ian Rolls, Gina Socrates, Jersey Heritage, Visit Jersey, John Ovenden, Gary Grimshaw, INTO (International National Trusts Organisation)

Front Cover: Dolphins off Les Écréhous
Photo credit : John Ovenden

©2020 - Discover Magazine is published by
The National Trust for Jersey.

The publisher, editor and authors accept no responsibility in respect of any errors, omissions, misstatements, mistakes or references.

Correct at the time of print February 2020



Discover is printed using only paper from FSC/PEFC suppliers from well managed forests. This magazine can be recycled and we encourage you to do so at your recycling point. Passing the magazine onto a friend counts as recycling too.