

# Scavenger Hunt

Ahoy there! I have an exciting scavenger hunt for you. You will need to look carefully on the beaches (yellow tick boxes) and the sand dunes at St Ouen (white tick boxes) to find these treasures. **See if you can find them all!**



## Rope

You may have already collected some of this as part of our Litter Loot activity.



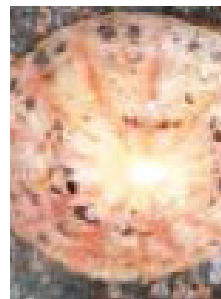
## Whelk Eggs

These papery balls were the eggs of a large, slow moving sea snail that lives in the sea. By the time they arrive on the beach, the baby snails have usually hatched a long time ago.



## Sea Glass

Formed from broken bottles that ended up in the sea. These smooth pieces can take up to 100 years to form!



## Limpet Shell

These little dome shaped snails hold onto the rocks with really strong teeth.



## Sea Pottery

Made smooth in the same way as sea glass, these are pieces of old broken plates and bowls.



## Periwinkle Shell

These little seasnails comes in all sorts of beautiful colours. Just make sure the snail has moved out before you take the shell home!



## Grove Snail Shells

You will need to venture further inland to find these striped beauties



## Driftwood

try to get a long piece if you are making sea art



### Mermaid's Purses

These are the egg cases of dogfishes and rays. For more information about these, see the Mermaids Purse Activity on the National Trust Activity Hub.



### Slipper Limpets

These are found all over Jersey, sometimes stacked on top of each other in long chains. They actually came from America last century and must have liked it here, as they stayed!



### Bunny Grass

The seed heads of this grass are what gives it its name, as they are soft and fluffy, like bunny tails.



### Scallop Shell

### Feathers



### Cypress Cones

These hold the seeds of a tree from the conifer family, so are related to Christmas trees and Pine trees.



### Cuttlebone

The cuttlebone is the inside shell of the Cuttlefish, which is a sea creature a bit like a squid.



### Fishing Line

This beach litter is harmful to many sea creatures. Please be careful, as there are sometimes sharp hooks.



### Cockle Shells

Can you find a pair that is still joined?

After you've found them all, you can go to the Activity Hub at [www.nationaltrust.je](http://www.nationaltrust.je), if you want to learn how to weave your treasures into a beautiful piece of art!

